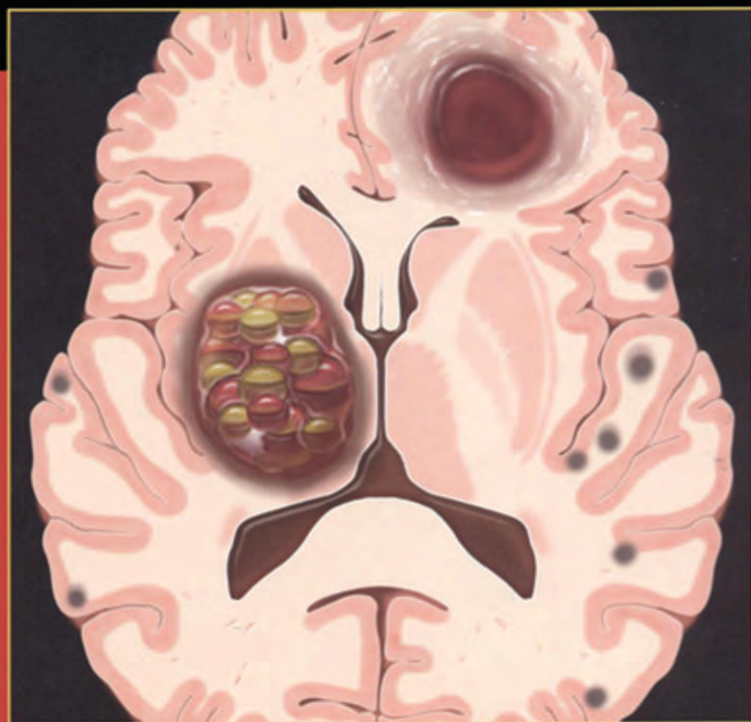
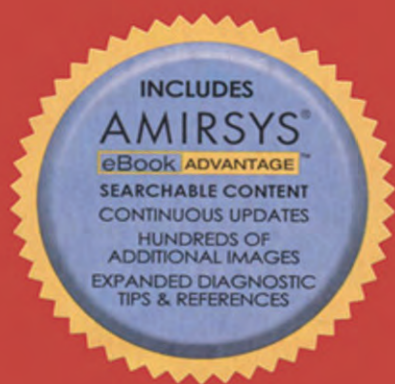


SECOND EDITION

DIAGNOSTIC IMAGING

BRAIN



OSBORN

Salzman • Barkovich

Katzman • Provenzale • Harnsberger • Blaser • Ho • Hamilton • Jhaveri • Illner • Moore • Thurnher • Harder • Jones • Loevner • Nesbit • Vézina • Hedlund • Raybaud • Grant • Ng • Anzai • Rees • Quigley • Anderson • Shah • Rassner



DIAGNOSTIC IMAGING

BRAIN

SECOND EDITION



DIAGNOSTIC IMAGING

BRAIN

SECOND EDITION

Anne G. Osborn, MD, FACR

University Distinguished Professor
Professor of Radiology
William H. and Patricia W. Child
Presidential Endowed Chair in Radiology
University of Utah School of Medicine
Salt Lake City, UT

Karen L. Salzman, MD

Associate Professor of Radiology
Leslie W. Davis Endowed Chair in Neuroradiology
University of Utah School of Medicine
Salt Lake City, UT

A. James Barkovich, MD

Professor of Radiology, Neurology, Pediatrics and Neurosurgery
University of California at San Francisco
San Francisco, CA

Gregory L. Katzman, MD, MBA

Neuroradiologist
Section of Neuroradiology
SimonMed Imaging, Inc.
Scottsdale, AZ

James M. Provenzale, MD

Professor of Radiology
Duke University Medical Center
Durham, NC
Professor of Radiology, Biomedical Engineering and Oncology
Emory University School of Medicine
Atlanta, GA

H. Ric Harnsberger, MD

Professor of Radiology and Otolaryngology
R.C. Willey Chair in Neuroradiology
University of Utah School of Medicine
Salt Lake City, UT

Susan I. Blaser, MD, FRCPC

Staff Neuroradiologist
The Hospital for Sick Children
Associate Professor of Neuroradiology
University of Toronto
Ontario, Canada

Chang Y. Ho, MD

Assistant Professor of Radiology
Director of Pediatric Neuroradiology
Riley Hospital for Children
Indiana University School of Medicine
Indianapolis, IN

Bronwyn E. Hamilton, MD

Associate Professor of Radiology
Oregon Health & Science University
Portland, OR

Miral D. Jhaveri, MD

Assistant Professor
Department of Diagnostic Radiology & Nuclear Medicine
Rush University Medical Center
Chicago, IL

Anna Illner, MD

Pediatric Neuroradiologist
Texas Children's Hospital
Assistant Professor of Radiology
Baylor College of Medicine
Houston, TX

Kevin R. Moore, MD

Pediatric Neuroradiologist
Primary Children's Medical Center
Adjunct Associate Professor of Radiology
Section of Neuroradiology
University of Utah School of Medicine
Salt Lake City, UT

Majda M. Thurnher, MD

Associate Professor of Radiology
Department of Radiology
Medical University of Vienna
Vienna, Austria

Sheri L. Harder, MD, FRCPC

Assistant Professor of Radiology
Loma Linda University Medical Center
Loma Linda, CA



Blaise V. Jones, MD

Division Chief, Neuroradiology
Cincinnati Children's Hospital Medical Center
Associate Professor of Radiology and Pediatrics
University of Cincinnati College of Medicine
Cincinnati, OH

Laurie A. Loevner, MD

Professor of Radiology & Otolaryngology: Head & Neck Surgery
Neuroradiology Division
University of Pennsylvania School of Medicine
Philadelphia, PA

Gary M. Nesbit, MD

Professor of Radiology, Neurology, Neurological Surgery
and the Dotter Interventional Institute
Oregon Health & Science University
Portland, OR

Gilbert Vézina, MD

Director, Program in Neuroradiology
Children's National Medical Center
Professor of Radiology and Pediatrics
The George Washington University School of Medicine and
Health Sciences
Washington, DC

Gary L. Hedlund, DO

Adjunct Professor of Radiology
University of Utah School of Medicine
Pediatric Neuroradiologist
Department of Medical Imaging
Primary Children's Medical Center
Salt Lake City, UT

Charles Raybaud, MD, FRCPC

Head of the Division of Neuroradiology
The Hospital for Sick Children
Professor of Radiology
University of Toronto
Toronto, Ontario

P. Ellen Grant, MD

Associate Professor in Radiology, Harvard Medical School
Founding Director, Center for Fetal-Neonatal Neuroimaging &
Developmental Science
Director of Fetal and Neonatal Neuroimaging Research
Children's Hospital Boston Chair in Neonatology
Children's Hospital Boston
Member of the Affiliated Faculty of the Harvard-MIT Division of
Health Sciences and Technology
Children's Hospital Boston
Boston, MA

Perry P. Ng, MBBS (Hons), FRANZCR

Assistant Professor, Department of Radiology
Interventional Neuroradiologist
University of Utah School of Medicine
Salt Lake City, UT

Yoshimi Anzai, MD, MPH

Professor, Department of Radiology
University of Washington Medical Center
Seattle, WA

John H. Rees, MD

Neuroradiologist,
Progressive Radiology
Assistant Professor of Radiology,
Georgetown University
Visiting Scientist,
Armed Forces Institute of Pathology
Washington, DC

Edward P. Quigley, III, MD, PhD

Assistant Professor of Radiology
Division of Neuroradiology
University of Utah School of Medicine
Salt Lake City, UT

Jeffrey S. Anderson, MD, PhD

Assistant Professor of Neuroradiology and Bioengineering
University of Utah School of Medicine
Salt Lake City, UT

Lubdha M. Shah, MD

Assistant Professor of Radiology
Division of Neuroradiology
University of Utah School of Medicine
Salt Lake City, UT

Ulrich A. Rassner, MD

Assistant Professor of Radiology
Division of Neuroradiology
University of Utah School of Medicine
Salt Lake City, UT



AMIRSYS®

Names you know. Content you trust.®

Second Edition

© 2010 Amirsys, Inc.

Compilation © 2010 Amirsys Publishing, Inc.

All rights reserved. No portion of this publication may be reproduced, stored in a retrieval system, or transmitted, in any form or media or by any means, electronic, mechanical, optical, photocopying, recording, or otherwise, without prior written permission from the respective copyright holders.

Printed in Canada by Friesens, Altona, Manitoba, Canada

ISBN: 978-1-931884-72-3

Notice and Disclaimer

The information in this product ("Product") is provided as a reference for use by licensed medical professionals and no others. It does not and should not be construed as any form of medical diagnosis or professional medical advice on any matter. Receipt or use of this Product, in whole or in part, does not constitute or create a doctor-patient, therapist-patient, or other healthcare professional relationship between the copyright holders and any recipient. This Product may not reflect the most current medical developments, and the copyright holders (individually and jointly), make no claims, promises, or guarantees about accuracy, completeness, or adequacy of the information contained in or linked to the Product. The Product is not a substitute for or replacement of professional medical judgment. The copyright holders, and their affiliates, authors, contributors, partners, and sponsors, individually and jointly, disclaim all liability or responsibility for any injury and/or damage to persons or property in respect to actions taken or not taken based on any and all Product information.

In the cases where drugs or other chemicals are prescribed, readers are advised to check the Product information currently provided by the manufacturer of each drug to be administered to verify the recommended dose, the method and duration of administration, and contraindications. It is the responsibility of the treating physician relying on experience and knowledge of the patient to determine dosages and the best treatment for the patient.

To the maximum extent permitted by applicable law, the copyright holders provide the Product AS IS AND WITH ALL FAULTS, AND HEREBY DISCLAIMS ALL WARRANTIES AND CONDITIONS, WHETHER EXPRESS, IMPLIED OR STATUTORY, INCLUDING BUT NOT LIMITED TO, ANY (IF ANY) IMPLIED WARRANTIES OR CONDITIONS OF MERCHANTABILITY, OF FITNESS FOR A PARTICULAR PURPOSE, OF LACK OF VIRUSES, OR ACCURACY OR COMPLETENESS OF RESPONSES, OR RESULTS, AND OF LACK OF NEGLIGENCE OR LACK OF WORKMANLIKE EFFORT. ALSO, THERE IS NO WARRANTY OR CONDITION OF TITLE, QUIET ENJOYMENT, QUIET POSSESSION, CORRESPONDENCE TO DESCRIPTION OR NON-INFRINGEMENT, WITH REGARD TO THE PRODUCT. THE ENTIRE RISK AS TO THE QUALITY OF OR ARISING OUT OF USE OR PERFORMANCE OF THE PRODUCT REMAINS WITH THE READER.

The respective copyright holders, individually and jointly, disclaim all warranties of any kind if the Product was customized, repackaged or altered in any way by any third party.

Library of Congress Cataloging-in-Publication Data

Diagnostic imaging. Brain / [edited by] Anne G. Osborn, Karen L. Salzman, A. James Barkovich. -- 2nd ed.
p. ; cm.

Includes bibliographical references and index.

ISBN 978-1-931884-72-3

1. Brain--Imaging--Handbooks, manuals, etc. I. Osborn, Anne G., 1943- II. Salzman, Karen L. III. Barkovich, A. James, 1952- IV. Title: Brain.

[DNLM: 1. Brain--radiography. 2. Central Nervous System Diseases--diagnosis. 3. Diagnosis, Differential. 4. Neuroradiography--methods. WL 141 D5347 2009]

RC386.6.D52D53 2009

616.8'04754--dc22

2009038951

To the intrepid Amirsys "Brain Team"

You put your collective bodies into the harness and pulled unbelievably hard to get this one across the finish line in record time. Wouldn't have happened without you! We did it!

AGO

PREFACE

Welcome to one of the first volumes in the series of brand-new *Diagnostic Imaging*, second edition books. The response to the first editions was overwhelmingly positive. The gorgeous graphics, Key Facts boxes, high-resolution images, and “don’t waste any words” philosophy behind the synoptic text bullets met with great success. We on the “Brain Team” loved writing the first edition. You clearly loved the new templated style and have asked for more. So we’ve rounded up our stellar team once again and produced what we think is an even better, more robust second edition.

What’s new? In a nutshell, lots! We’ve improved but kept the basic layout so that the same information is in the same place—every time, in every volume. We’ve added over one hundred *new diagnoses*, thousands of *new images*, and a bunch more of our *signature color graphics*. The references have all been updated to within a few weeks of publication. What else makes the second edition significantly different? We’ve added prose (yes, prose!) introductions to each section. These almost literally “take you by the hand,” leading you through an overview and orientation to the specific diagnoses that really can’t be conveyed any other way.

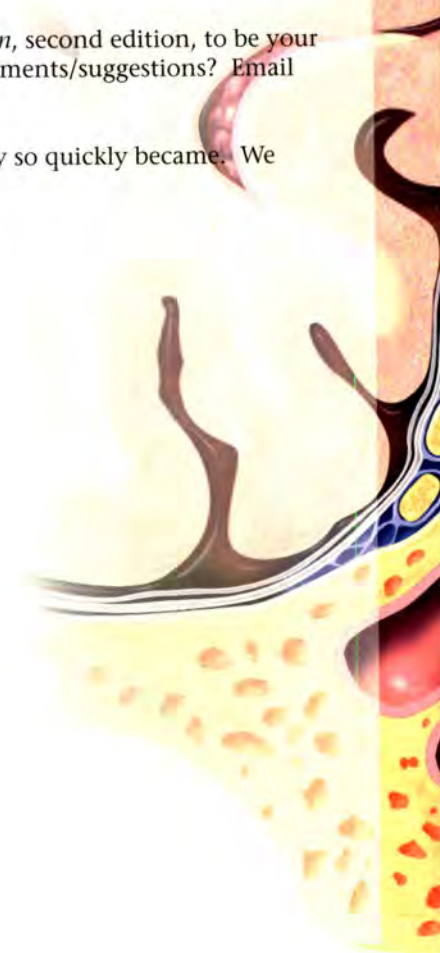
The introduction to the section on neoplasms covers the newest World Health Organization (WHO) classification and grading schema. Other introductions provide an approach to understanding brain malformations, toxic/metabolic disorders, trauma, infections, etc. New tables, charts, diagrams, and pathology images have been added for your delectation and reading delight.

We’ve loved hearing from you. We appreciate—and pay close attention to—your ideas and input on what new diagnoses or information you’d like to see included. Thanks also for the beautiful cases that some of you have shared with us. We’ve chosen to include images from some of them in this second edition with our grateful acknowledgement.

You, the reader, are the reason we “do what we do.” We want *Diagnostic Imaging: Brain*, second edition, to be your favorite neuroradiology text—used, worn, dog-eared, and loved. Any ideas/thoughts/comments/suggestions? Email them to feedback@amirsys.com, and I’ll answer personally.

Thanks again for making the books in our *Diagnostic Imaging* series the bestsellers they so quickly became. We hope you enjoy the sequels!

Anne G. Osborn, MD, FACP
University Distinguished Professor
Professor of Radiology
William H. and Patricia W. Child
Presidential Endowed Chair in Radiology
University of Utah School of Medicine
Salt Lake City, UT



ACKNOWLEDGEMENTS

Text Editing

Kellie J. Heap
Arthur G. Gelsinger, MA
Katherine Riser, MA
Dave L. Chance, MA

Image Editing

Jeffrey J. Marmorstone
Danny C. La

Medical Editing

Sirisha Komakula, MBBS
Jason Druzgal, MD, PhD
Ulrich A. Rassner, MD
Tasha N. Ellchuk, BSc, MD, FRCPC

Illustrations

James A. Copper, MD
Lane R. Bennion, MS
Richard Coombs, MS
Laura C. Sesto, MA

Associate Editor

Ashley R. Renlund, MA

Production Lead

Melissa A. Hoopes



AMIRSYS®

Names you know. Content you trust.®

TABLE OF CONTENTS

PART I **Pathology-based Diagnoses**

SECTION 1 **Congenital Malformations**

Introduction and Overview

Congenital Malformations Overview **I-1-2**
A. James Barkovich, MD

Hindbrain Herniations, Miscellaneous Malformations

Chiari 1 **I-1-6**
Susan I. Blaser, MD, FRCPC

Chiari 2 **I-1-10**
Susan I. Blaser, MD, FRCPC

Chiari 3 **I-1-14**
Susan I. Blaser, MD, FRCPC

Callosal Dysgenesis **I-1-18**
Charles Raybaud, MD, FRCPC

Lipoma **I-1-22**
A. James Barkovich, MD

Hindbrain Malformations

Dandy-Walker Continuum **I-1-26**
Susan I. Blaser, MD, FRCPC

Rhombencephalosynapsis **I-1-30**
Blaise V. Jones, MD

Unclassified Cerebellar Dysplasias **I-1-34**
Blaise V. Jones, MD

Molar Tooth Malformations (Joubert) **I-1-36**
Charles Raybaud, MD, FRCPC

Disorders of Diverticulation/Cleavage

Holoprosencephaly **I-1-40**
Charles Raybaud, MD, FRCPC

Holoprosencephaly Variants **I-1-44**
Anna Illner, MD

Syntelencephaly (Middle Interhemispheric Variant) **I-1-48**

Charles Raybaud, MD, FRCPC

Central Incisor Syndrome/Solitary Median Maxillary Central Incisor **I-1-52**

Blaise V. Jones, MD

Septo-optic Dysplasia **I-1-54**
A. James Barkovich, MD

Malformations of Cortical Development

Microcephaly **I-1-58**
Gary L. Hedlund, DO

Congenital Muscular Dystrophy **I-1-62**
Charles Raybaud, MD, FRCPC

Heterotopic Gray Matter **I-1-66**
Charles Raybaud, MD, FRCPC

Polymicrogyria **I-1-70**
A. James Barkovich, MD

Lissencephaly **I-1-74**
Blaise V. Jones, MD

Schizencephaly **I-1-78**
Blaise V. Jones, MD

Hemimegalencephaly **I-1-82**
Blaise V. Jones, MD

Familial Tumor/ Neurocutaneous Syndromes

Neurofibromatosis Type 1 **I-1-86**
Gilbert Vézina, MD

Neurofibromatosis Type 2 **I-1-90**
Gilbert Vézina, MD

von Hippel-Lindau **I-1-94**
Gilbert Vézina, MD

Tuberous Sclerosis Complex **I-1-98**
Gilbert Vézina, MD

Sturge-Weber Syndrome **I-1-102**
Gilbert Vézina, MD

Meningioangiomasia **I-1-106**
Gilbert Vézina, MD

Basal Cell Nevus Syndrome **I-1-108**
Gilbert Vézina, MD

Hereditary Hemorrhagic Telangiectasia **I-1-112**
Charles Raybaud, MD, FRCPC

Encephalocraniocutaneous Lipomatosis	I-1-116
<i>Gilbert Vézina, MD</i>	
Lhermitte-Duclos Disease	I-1-120
<i>P. Ellen Grant, MD</i>	
Neurocutaneous Melanosis	I-1-124
<i>Gilbert Vézina, MD</i>	
Aicardi Syndrome	I-1-128
<i>P. Ellen Grant, MD</i>	
Li-Fraumeni Syndrome	I-1-130
<i>Gilbert Vézina, MD</i>	

SECTION 2 Trauma

Introduction and Overview

Trauma Overview	I-2-2
<i>Anne G. Osborn, MD, FACR</i>	

Primary Effects of CNS Trauma

Missile and Penetrating Injury	I-2-6
<i>Sheri L. Harder, MD, FRCPC</i>	
Epidural Hematoma	I-2-10
<i>Gregory L. Katzman, MD, MBA</i>	
Acute Subdural Hematoma	I-2-14
<i>Bronwyn E. Hamilton, MD</i>	
Subacute Subdural Hematoma	I-2-18
<i>Bronwyn E. Hamilton, MD</i>	
Chronic Subdural Hematoma	I-2-22
<i>Bronwyn E. Hamilton, MD</i>	
Mixed Subdural Hematoma	I-2-26
<i>Bronwyn E. Hamilton, MD</i>	
Traumatic Subarachnoid Hemorrhage	I-2-28
<i>Gregory L. Katzman, MD, MBA</i>	
Cerebral Contusion	I-2-32
<i>Gregory L. Katzman, MD, MBA</i>	
Diffuse Axonal Injury (DAI)	I-2-36
<i>Gregory L. Katzman, MD, MBA</i>	
Subcortical Injury	I-2-40
<i>Gregory L. Katzman, MD, MBA</i>	
Birth Trauma	I-2-44
<i>P. Ellen Grant, MD</i>	
Child Abuse	I-2-48
<i>Blaise V. Jones, MD</i>	

Secondary Effects of CNS Trauma

Intracranial Herniation Syndromes	I-2-52
<i>Anne G. Osborn, MD, FACR</i>	
Traumatic Cerebral Edema	I-2-56
<i>Sheri L. Harder, MD, FRCPC</i>	
Traumatic Cerebral Ischemia	I-2-60
<i>Gregory L. Katzman, MD, MBA</i>	
Brain Death	I-2-64
<i>Lubdha M. Shah, MD</i>	
Traumatic Intracranial Dissection	I-2-66
<i>Gary M. Nesbit, MD</i>	

Traumatic Extracranial Dissection	I-2-70
<i>Gary M. Nesbit, MD</i>	
Traumatic Carotid Cavernous Fistula	I-2-74
<i>Perry P. Ng, MBBS (Hons), FRANZCR</i>	

SECTION 3 Subarachnoid Hemorrhage and Aneurysms

Introduction and Overview

Subarachnoid Hemorrhage & Aneurysms Overview	I-3-2
<i>Anne G. Osborn, MD, FACR</i>	

Subarachnoid Hemorrhage

Aneurysmal Subarachnoid Hemorrhage	I-3-4
<i>Perry P. Ng, MBBS (Hons), FRANZCR</i>	
Perimesencephalic Nonaneurysmal SAH	I-3-8
<i>Gary M. Nesbit, MD</i>	
Superficial Siderosis	I-3-10
<i>H. Ric Harnsberger, MD</i>	

Aneurysms

Saccular Aneurysm	I-3-14
<i>Perry P. Ng, MBBS (Hons), FRANZCR</i>	
Pseudoaneurysm	I-3-18
<i>Perry P. Ng, MBBS (Hons), FRANZCR</i>	
Vertebrobasilar Dolichoectasia	I-3-20
<i>Gary M. Nesbit, MD</i>	
ASVD Fusiform Aneurysm	I-3-22
<i>Gary M. Nesbit, MD</i>	
Non-ASVD Fusiform Aneurysm	I-3-24
<i>Gary M. Nesbit, MD</i>	
Blood Blister-like Aneurysm	I-3-26
<i>Perry P. Ng, MBBS (Hons), FRANZCR</i>	

SECTION 4 Stroke

Introduction and Overview

Stroke Overview	I-4-2
<i>Karen L. Salzman, MD</i>	

Nontraumatic Intracranial Hemorrhage

Evolution of Intracranial Hemorrhage	I-4-6
<i>Ulrich A. Rassner, MD</i>	
Spontaneous Nontraumatic Intracranial Hemorrhage	I-4-10
<i>Laurie A. Loevner, MD</i>	
Hypertensive Intracranial Hemorrhage	I-4-14
<i>Laurie A. Loevner, MD</i>	

Remote Cerebellar Hemorrhage <i>Bronwyn E. Hamilton, MD</i>	I-4-18	Childhood Stroke <i>Blaise V. Jones, MD</i>	I-4-102
Germinal Matrix Hemorrhage <i>P. Ellen Grant, MD</i>	I-4-20	Dyke-Davidoff-Masson Syndrome <i>Chang Y. Ho, MD</i>	I-4-106
Atherosclerosis and Carotid Stenosis		Acute Cerebral Ischemia-Infarction <i>Edward P. Quigley, III, MD, PhD</i>	I-4-108
Intracranial Atherosclerosis <i>Bronwyn E. Hamilton, MD</i>	I-4-24	Subacute Cerebral Infarction <i>Sheri L. Harder, MD, FRCPC</i>	I-4-112
Extracranial Atherosclerosis <i>Bronwyn E. Hamilton, MD</i>	I-4-28	Chronic Cerebral Infarction <i>Sheri L. Harder, MD, FRCPC</i>	I-4-116
Arteriolo sclerosis <i>Gary M. Nesbit, MD</i>	I-4-32	ACA Cerebral Infarction <i>Edward P. Quigley, III, MD, PhD</i>	I-4-120
Nonatheromatous Vasculopathy		MCA Cerebral Infarction <i>Edward P. Quigley, III, MD, PhD</i>	I-4-121
Aberrant Internal Carotid Artery <i>H. Ric Harnsberger, MD</i>	I-4-36	PCA Cerebral Infarction <i>Edward P. Quigley, III, MD, PhD</i>	I-4-122
Persistent Carotid Basilar Anastomoses <i>Charles Raybaud, MD, FRCPC</i>	I-4-40	Choroidal Artery Cerebral Infarction <i>Edward P. Quigley, III, MD, PhD</i>	I-4-123
Sickle Cell Disease, Brain <i>Anna Illner, MD</i>	I-4-42	COW Perforating Artery Cerebral Infarction <i>Edward P. Quigley, III, MD, PhD</i>	I-4-124
Moyamoya <i>Anna Illner, MD</i>	I-4-46	Artery of Percheron Cerebral Infarction <i>Edward P. Quigley, III, MD, PhD</i>	I-4-125
Primary Arteritis of the CNS <i>Gary M. Nesbit, MD</i>	I-4-50	Top of Basilar Cerebral Infarction <i>Edward P. Quigley, III, MD, PhD</i>	I-4-126
Miscellaneous Vasculitis <i>Gary M. Nesbit, MD</i>	I-4-54	Basilar Thrombosis Cerebral Infarction <i>Edward P. Quigley, III, MD, PhD</i>	I-4-127
Reversible Cerebral Vasoconstriction Syndrome <i>Perry P. Ng, MBBS (Hons), FRANZCR</i>	I-4-58	Basilar Perforating Artery Cerebral Infarction <i>Edward P. Quigley, III, MD, PhD</i>	I-4-128
Vasospasm <i>Perry P. Ng, MBBS (Hons), FRANZCR</i>	I-4-60	Superior Cerebellar Artery Cerebral Infarction <i>Edward P. Quigley, III, MD, PhD</i>	I-4-129
Systemic Lupus Erythematosus <i>Gary M. Nesbit, MD</i>	I-4-64	AICA Cerebellar Infarction <i>Edward P. Quigley, III, MD, PhD</i>	I-4-130
Antiphospholipid Antibody Syndrome <i>Jeffrey S. Anderson, MD, PhD</i>	I-4-68	PICA Cerebellar Infarction <i>Edward P. Quigley, III, MD, PhD</i>	I-4-131
Thrombotic Microangiopathies (HUS/TTP) <i>Anne G. Osborn, MD, FACR</i>	I-4-70	Multiple Embolic Cerebral Infarctions <i>Edward P. Quigley, III, MD, PhD</i>	I-4-132
Cerebral Amyloid Disease <i>Bronwyn E. Hamilton, MD</i>	I-4-72	Fat Emboli Cerebral Infarction <i>Karen L. Salzman, MD</i>	I-4-133
CADASIL <i>Ulrich A. Rassner, MD</i>	I-4-76	Lacunar Infarction <i>Ulrich A. Rassner, MD</i>	I-4-134
Behcet Disease <i>Karen L. Salzman, MD</i>	I-4-80	Cerebral Hyperperfusion Syndrome <i>Anne G. Osborn, MD, FACR</i>	I-4-138
Fibromuscular Dysplasia <i>Perry P. Ng, MBBS (Hons), FRANZCR</i>	I-4-82	Cavernous Sinus Thrombosis/Thrombophlebitis <i>Laurie A. Loevner, MD</i>	I-4-144
Cerebral Ischemia and Infarction		Dural Sinus Thrombosis <i>Bronwyn E. Hamilton, MD</i>	I-4-146
Hydranencephaly <i>Anna Illner, MD</i>	I-4-84	Cortical Venous Thrombosis <i>Bronwyn E. Hamilton, MD</i>	I-4-150
White Matter Injury of Prematurity <i>P. Ellen Grant, MD</i>	I-4-86	Deep Cerebral Venous Thrombosis <i>Bronwyn E. Hamilton, MD</i>	I-4-154
Term Hypoxic Ischemic Injury <i>P. Ellen Grant, MD</i>	I-4-90	Dural Sinus and Aberrant Arachnoid Granulations <i>H. Ric Harnsberger, MD</i>	I-4-158
Adult Hypoxic Ischemic Injury <i>Lubdha M. Shah, MD</i>	I-4-94		
Hypotensive Cerebral Infarction <i>Bronwyn E. Hamilton, MD</i>	I-4-98		

SECTION 5

Vascular Malformations

Introduction and Overview

- Vascular Malformations Overview **I-5-2**
Anne G. Osborn, MD, FACR

CVMs with AV Shunting

- Arteriovenous Malformation **I-5-4**
Perry P. Ng, MBBS (Hons), FRANZCR
- Dural AV Fistula **I-5-8**
Perry P. Ng, MBBS (Hons), FRANZCR
- Pial AV Fistula **I-5-12**
Gary M. Nesbit, MD
- Nontraumatic Carotid-Cavernous Fistula **I-5-14**
Gary M. Nesbit, MD
- Vein of Galen Aneurysmal Malformation **I-5-16**
Anna Illner, MD

CVMs without AV Shunting

- Developmental Venous Anomaly **I-5-20**
Anne G. Osborn, MD, FACR
- Sinus Pericranii **I-5-26**
Anna Illner, MD
- Cavernous Malformation **I-5-30**
Anne G. Osborn, MD, FACR
- Capillary Telangiectasia **I-5-34**
Anne G. Osborn, MD, FACR

SECTION 6

Neoplasms

Introduction and Overview

- Neoplasms Overview **I-6-2**
Anne G. Osborn, MD, FACR

Astrocytic Tumors, Infiltrating

- Low-Grade Diffuse Astrocytoma **I-6-6**
Karen L. Salzman, MD
- Pediatric Brainstem Tumors **I-6-10**
Chang Y. Ho, MD
- Anaplastic Astrocytoma **I-6-14**
Karen L. Salzman, MD
- Glioblastoma Multiforme **I-6-18**
Karen L. Salzman, MD
- Gliosarcoma **I-6-22**
Karen L. Salzman, MD
- Gliomatosis Cerebri **I-6-24**
Karen L. Salzman, MD

Astrocytic Tumors, Localized

- Pilocytic Astrocytoma **I-6-28**
Chang Y. Ho, MD

- Pilomyxoid Astrocytoma **I-6-32**
Anne G. Osborn, MD, FACR
- Pleomorphic Xanthoastrocytoma **I-6-36**
Karen L. Salzman, MD
- Subependymal Giant Cell Astrocytoma **I-6-40**
John H. Rees, MD

Oligodendroglial and Miscellaneous Tumors

- Oligodendroglioma **I-6-44**
Karen L. Salzman, MD
- Anaplastic Oligodendroglioma **I-6-48**
Karen L. Salzman, MD
- Astroblastoma **I-6-52**
Karen L. Salzman, MD
- Chordoid Glioma of the Third Ventricle **I-6-56**
John H. Rees, MD
- Angiocentric Glioma **I-6-58**
Majda M. Thurnher, MD

Ependymal Tumors

- Infratentorial Ependymoma **I-6-60**
Majda M. Thurnher, MD
- Supratentorial Ependymoma **I-6-64**
Majda M. Thurnher, MD
- Subependymoma **I-6-68**
Karen L. Salzman, MD

Choroid Plexus Tumors

- Typical Choroid Plexus Papilloma **I-6-72**
Chang Y. Ho, MD
- Atypical Choroid Plexus Papilloma **I-6-76**
Chang Y. Ho, MD
- Choroid Plexus Carcinoma **I-6-78**
Chang Y. Ho, MD

Neuronal and Mixed Neuronal-Glial Tumors

- Ganglioglioma **I-6-82**
Karen L. Salzman, MD
- Desmoplastic Infantile Astrocytoma and Ganglioglioma **I-6-86**
Chang Y. Ho, MD
- DNET **I-6-90**
Laurie A. Loevner, MD
- Central Neurocytoma **I-6-94**
Karen L. Salzman, MD
- Extraventricular Neurocytoma **I-6-98**
Karen L. Salzman, MD
- Cerebellar Liponeurocytoma **I-6-100**
John H. Rees, MD
- Papillary Glioneuronal Tumor **I-6-101**
John H. Rees, MD
- Rosette-Forming Glioneuronal Tumor **I-6-102**
Majda M. Thurnher, MD

Pineal Parenchymal Tumors

Pineocytoma	I-6-104
<i>Laurie A. Loevner, MD</i>	
Pineal Parenchymal Tumor of Intermediate Differentiation	I-6-108
<i>Anne G. Osborn, MD, FACR</i>	
Pineoblastoma	I-6-112
<i>Laurie A. Loevner, MD</i>	
Papillary Tumor of the Pineal Region	I-6-116
<i>John H. Rees, MD</i>	

Embryonal and Neuroblastic Tumors

Medulloblastoma	I-6-118
<i>Majda M. Thurnher, MD</i>	
Variant Medulloblastoma	I-6-122
<i>Majda M. Thurnher, MD</i>	
Supratentorial PNET	I-6-124
<i>Laurie A. Loevner, MD</i>	
Atypical Teratoid-Rhabdoid Tumor	I-6-128
<i>Chang Y. Ho, MD</i>	
Metastatic Neuroblastoma	I-6-132
<i>Chang Y. Ho, MD</i>	

Tumors of Cranial/Peripheral Nerves

Nonvestibular Schwannoma	I-6-136
<i>Anne G. Osborn, MD, FACR</i>	
Neurofibroma	I-6-140
<i>John H. Rees, MD</i>	

Blood Vessel and Hemopoietic Tumors

Hemangioblastoma	I-6-142
<i>John H. Rees, MD</i>	
Hemangiopericytoma	I-6-146
<i>Karen L. Salzman, MD</i>	
Primary CNS Lymphoma	I-6-150
<i>Karen L. Salzman, MD</i>	
Intravascular (Angiocentric) Lymphoma	I-6-154
<i>Karen L. Salzman, MD</i>	
Leukemia	I-6-158
<i>Miral D. Jhaveri, MD</i>	

Germ Cell Tumors

Germinoma	I-6-162
<i>Majda M. Thurnher, MD</i>	
Teratoma	I-6-166
<i>Majda M. Thurnher, MD</i>	
Miscellaneous Malignant Germ Cell Neoplasms	I-6-170
<i>Majda M. Thurnher, MD</i>	

Metastatic Tumors and Remote Effects of Cancer

Parenchymal Metastases	I-6-174
<i>Anne G. Osborn, MD, FACR</i>	

Miscellaneous Intracranial Metastases	I-6-178
<i>Anne G. Osborn, MD, FACR</i>	
Metastatic Intracranial Lymphoma	I-6-180
<i>Karen L. Salzman, MD</i>	
Paraneoplastic Syndromes	I-6-182
<i>Karen L. Salzman, MD</i>	

SECTION 7 Primary Nonneoplastic Cysts

Introduction and Overview

Primary Nonneoplastic Cysts Overview	I-7-2
<i>Anne G. Osborn, MD, FACR</i>	

Primary Nonneoplastic Cysts

Arachnoid Cyst	I-7-6
<i>Anne G. Osborn, MD, FACR</i>	
Colloid Cyst	I-7-10
<i>Anne G. Osborn, MD, FACR</i>	
Dermoid Cyst	I-7-14
<i>Chang Y. Ho, MD</i>	
Epidermoid Cyst	I-7-18
<i>Gregory L. Katzman, MD, MBA</i>	
Neuroglial Cyst	I-7-22
<i>Anne G. Osborn, MD, FACR</i>	
Periventricular Cyst	I-7-24
<i>Susan I. Blaser, MD, FRCPC</i>	
Choroid Fissure Cyst	I-7-28
<i>Chang Y. Ho, MD</i>	
Hippocampal Sulcus Remnant Cysts	I-7-29
<i>Chang Y. Ho, MD</i>	
Enlarged Perivascular Spaces	I-7-30
<i>Anne G. Osborn, MD, FACR</i>	
Pineal Cyst	I-7-34
<i>Anne G. Osborn, MD, FACR</i>	
Choroid Plexus Cyst	I-7-38
<i>Anne G. Osborn, MD, FACR</i>	
Ependymal Cyst	I-7-42
<i>Anne G. Osborn, MD, FACR</i>	
Porencephalic Cyst	I-7-44
<i>Gregory L. Katzman, MD, MBA</i>	
Neurenteric Cyst	I-7-48
<i>Anne G. Osborn, MD, FACR</i>	
Nonneoplastic Tumor-associated Cysts	I-7-50
<i>Anne G. Osborn, MD, FACR</i>	

SECTION 8 Infectious and Demyelinating Disease

Introduction and Overview

CNS Infectious Disease Overview	I-8-2
<i>Anne G. Osborn, MD, FACR</i>	

Congenital/Neonatal Infections

TORCH Infections, Overview	I-8-4
<i>Gary L. Hedlund, DO</i>	
Congenital CMV	I-8-8
<i>Gary L. Hedlund, DO</i>	
Congenital HIV	I-8-12
<i>Gary L. Hedlund, DO</i>	
Neonatal Herpes Encephalitis	I-8-14
<i>Gary L. Hedlund, DO</i>	

Acquired Infections

Group B Streptococcal Meningitis	I-8-16
<i>Gary L. Hedlund, DO</i>	
Citrobacter Meningitis	I-8-20
<i>Gary L. Hedlund, DO</i>	
Meningitis	I-8-24
<i>Karen L. Salzman, MD</i>	
Abscess	I-8-28
<i>Karen L. Salzman, MD</i>	
Ventriculitis	I-8-32
<i>Karen L. Salzman, MD</i>	
Empyema	I-8-34
<i>Karen L. Salzman, MD</i>	
Herpes Encephalitis	I-8-38
<i>Karen L. Salzman, MD</i>	
Miscellaneous Encephalitis	I-8-42
<i>Karen L. Salzman, MD</i>	
West Nile Virus Encephalitis	I-8-46
<i>Laurie A. Loevner, MD</i>	
HHV-6 Encephalitis	I-8-48
<i>Miral D. Jhaveri, MD</i>	
Cerebellitis	I-8-49
<i>Gary L. Hedlund, DO</i>	
Rasmussen Encephalitis	I-8-50
<i>Gary L. Hedlund, DO</i>	
Subacute Sclerosing Panencephalitis	I-8-54
<i>Gary L. Hedlund, DO</i>	
Tuberculosis	I-8-56
<i>Sheri L. Harder, MD, FRCPC</i>	
Neurocysticercosis	I-8-60
<i>Karen L. Salzman, MD</i>	
Hydatid Disease	I-8-64
<i>Miral D. Jhaveri, MD</i>	
Amebic Disease	I-8-66
<i>Miral D. Jhaveri, MD</i>	
Cerebral Malaria	I-8-68
<i>Anne G. Osborn, MD, FACR</i>	
Miscellaneous Parasites	I-8-70
<i>Karen L. Salzman, MD</i>	
Fungal Diseases	I-8-74
<i>Laurie A. Loevner, MD</i>	
Rickettsial Diseases	I-8-78
<i>Laurie A. Loevner, MD</i>	
Lyme Disease	I-8-80
<i>Laurie A. Loevner, MD</i>	

Acquired HIV Encephalitis	I-8-82
<i>James M. Provenzale, MD</i>	
Acquired Toxoplasmosis	I-8-86
<i>James M. Provenzale, MD</i>	
Acquired CMV	I-8-88
<i>Yoshimi Anzai, MD, MPH</i>	
Cryptococcosis	I-8-90
<i>Yoshimi Anzai, MD, MPH</i>	
Progressive Multifocal Leukoencephalopathy (PML)	I-8-92
<i>Yoshimi Anzai, MD, MPH</i>	
Immune Reconstitution Inflammatory Syndrome (IRIS)	I-8-94
<i>Miral D. Jhaveri, MD</i>	
HIV/AIDS, Miscellaneous Manifestations	I-8-96
<i>Miral D. Jhaveri, MD</i>	

Demyelinating Disease

Multiple Sclerosis	I-8-100
<i>Jeffrey S. Anderson, MD, PhD</i>	
Neuromyelitis Optica	I-8-104
<i>Jeffrey S. Anderson, MD, PhD</i>	
ADEM	I-8-106
<i>Jeffrey S. Anderson, MD, PhD</i>	
Susac Syndrome	I-8-110
<i>Jeffrey S. Anderson, MD, PhD</i>	

SECTION 9 Inherited Metabolic/ Degenerative Disorders

Introduction and Overview

Inherited Metabolic Disorders Overview	I-9-2
<i>A. James Barkovich, MD</i>	

Normal Variants

Hypomyelination	I-9-6
<i>Blaise V. Jones, MD</i>	

Mitochondrial Disorders

Leigh Syndrome	I-9-10
<i>A. James Barkovich, MD</i>	
MELAS	I-9-14
<i>Susan I. Blaser, MD, FRCPC</i>	
Kearns-Sayre Syndrome	I-9-18
<i>Susan I. Blaser, MD, FRCPC</i>	

Lysosomal Disorders

Mucopolysaccharidoses	I-9-20
<i>Susan I. Blaser, MD, FRCPC</i>	
Gangliosidosis (GM2)	I-9-24
<i>Anna Illner, MD</i>	
Metachromatic Leukodystrophy (MLD)	I-9-28
<i>Anna Illner, MD</i>	

Krabbe <i>Blaise V. Jones, MD</i>	I-9-32	Adult Hypoglycemia <i>John H. Rees, MD</i>	I-10-10
Fabry Disease <i>Miral D. Jhaveri, MD</i>	I-9-36	Kernicterus <i>P. Ellen Grant, MD</i>	I-10-12
Peroxisomal Disorders		Thyroid Disorders <i>Yoshimi Anzai, MD, MPH</i>	I-10-14
Zellweger Syndrome Spectrum <i>P. Ellen Grant, MD</i>	I-9-38	Parathyroid Disorders <i>Yoshimi Anzai, MD, MPH</i>	I-10-18
X-Linked Adrenoleukodystrophy <i>Susan I. Blaser, MD, FRCPC</i>	I-9-40	Fahr Disease <i>Gregory L. Katzman, MD, MBA</i>	I-10-20
Other Peroxisomal Disorders <i>Susan I. Blaser, MD, FRCPC</i>	I-9-44	Alcoholic Encephalopathy <i>Sheri L. Harder, MD, FRCPC</i>	I-10-24
Organic and Aminoacidopathies		Hepatic Encephalopathy <i>Basar Sarikaya, MD & James M. Provenzale, MD</i>	I-10-28
Maple Syrup Urine Disease <i>Susan I. Blaser, MD, FRCPC</i>	I-9-48	Acute Hypertensive Encephalopathy, PRES <i>Anne G. Osborn, MD, FACR</i>	I-10-32
Urea Cycle Disorders <i>P. Ellen Grant, MD</i>	I-9-52	Chronic Hypertensive Encephalopathy <i>Basar Sarikaya, MD & James M. Provenzale, MD</i>	I-10-36
Glutaric Aciduria Type 1 <i>Susan I. Blaser, MD, FRCPC</i>	I-9-54	Idiopathic Intracranial Hypertension <i>Yoshimi Anzai, MD, MPH</i>	I-10-40
Canavan Disease <i>P. Ellen Grant, MD</i>	I-9-58	Carbon Monoxide Poisoning <i>Yoshimi Anzai, MD, MPH</i>	I-10-42
Alexander Disease <i>Anna Illner, MD</i>	I-9-60	Drug Abuse <i>Yoshimi Anzai, MD, MPH</i>	I-10-46
Miscellaneous Organic/Aminoacidopathies <i>Anna Illner, MD</i>	I-9-64	Methanol Poisoning <i>Sheri L. Harder, MD, FRCPC</i>	I-10-50
Miscellaneous		Cyanide Poisoning <i>Sheri L. Harder, MD, FRCPC</i>	I-10-52
Megalencephaly with Leukoencephalopathy and Cysts (MLC) <i>Susan I. Blaser, MD, FRCPC</i>	I-9-66	Osmotic Demyelination Syndrome <i>Sheri L. Harder, MD, FRCPC</i>	I-10-54
Neurodegeneration with Brain Iron Accumulation (NBIA) <i>Chang Y. Ho, MD</i>	I-9-70	Radiation and Chemotherapy <i>Karen L. Salzman, MD</i>	I-10-58
PKAN <i>Anna Illner, MD</i>	I-9-72	Mesial Temporal Sclerosis <i>Kevin R. Moore, MD</i>	I-10-62
Huntington Disease <i>Basar Sarikaya, MD & James M. Provenzale, MD</i>	I-9-76	Status Epilepticus <i>Karen L. Salzman, MD</i>	I-10-66
Wilson Disease <i>Won-Jin Moon, MD & James M. Provenzale, MD</i>	I-9-80	Dementias and Degenerative Disorders	
SECTION 10			
Acquired Toxic/Metabolic/Degenerative Disorders			
Introduction and Overview			
Acquired Toxic/Metabolic Disorders Overview <i>Karen L. Salzman, MD</i>	I-10-2	Normal Aging Brain <i>Sheri L. Harder, MD, FRCPC</i>	I-10-70
Toxic, Metabolic, Nutritional, Systemic Diseases with CNS Manifestations		Alzheimer Disease <i>James M. Provenzale, MD</i>	I-10-74
		Vascular Dementia <i>Basar Sarikaya, MD & James M. Provenzale, MD</i>	I-10-78
Pediatric Hypoglycemia <i>P. Ellen Grant, MD</i>	I-10-6	Frontotemporal Lobar Degeneration <i>Won-Jin Moon, MD & James M. Provenzale, MD</i>	I-10-82
		Dementia with Lewy Bodies <i>Won-Jin Moon, MD & James M. Provenzale, MD</i>	I-10-86
		Creutzfeldt-Jakob Disease (CJD) <i>Karen L. Salzman, MD</i>	I-10-88
		Parkinson Disease <i>Won-Jin Moon, MD & James M. Provenzale, MD</i>	I-10-92
		Multiple System Atrophy <i>Basar Sarikaya, MD & James M. Provenzale, MD</i>	I-10-96