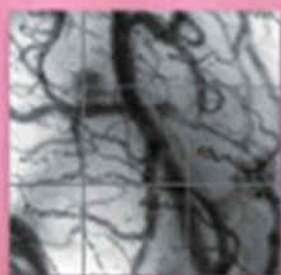
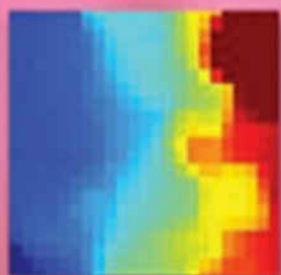


FUHRMAN & ZIMMERMAN'S

PEDIATRIC CRITICAL CARE



FIFTH EDITION

BRADLEY P. FUHRMAN | JERRY J. ZIMMERMAN

ROBERT S.B. CLARK | MONICA RELVAS | ALEXANDRE T. ROTTA

ANN E. THOMPSON | JOSEPH D. TOBIAS

ELSEVIER

Fuhrman & Zimmerman's Pediatric Critical Care

FIFTH EDITION

BRADLEY P. FUHRMAN, MD, FCCM

Professor and Chair, Department of Pediatrics, Texas Tech University – Paul L. Foster School of Medicine, Physician-in-Chief, El Paso Children's Hospital, El Paso, Texas

JERRY J. ZIMMERMAN, MD, PhD, FCCM

Professor of Pediatrics and Anesthesiology, Faculty, Pediatric Critical Care Medicine, Seattle Children's Hospital, Harborview Medical Center, University of Washington School of Medicine, Seattle, Washington

Robert S.B. Clark, MD

Professor and Chief, Pediatric Critical Care Medicine, Medical Director, Brain Care Institute, Children's Hospital of Pittsburgh of UPMC, Associate Director, Safar Center for Resuscitation Research, University of Pittsburgh, School of Medicine, Pittsburgh, Pennsylvania

Monica Relvas, MD, FAAP, FCCM, MSHA

Medical Director, Pediatric Critical Care Medicine, Covenant Women and Children's Hospital, Associate Clinical Professor, Texas Tech University, Lubbock, Texas

Alexandre T. Rotta, MD, FCCM

Linsalata Family Chair in Pediatric Critical Care and Emergency Medicine, Chief, Division of Pediatric Critical Care Medicine, UH Rainbow Babies and Children's Hospital, Professor, Department of Pediatrics, Case Western Reserve University School of Medicine, Cleveland, Ohio

Ann E. Thompson, MD, MHCPM

Professor, Critical Care Medicine, Vice Dean, University of Pittsburgh School of Medicine, Pittsburgh, Pennsylvania

Joseph D. Tobias, MD

Chief, Department of Anesthesiology and Pain Medicine, Nationwide Children's Hospital, Professor of Anesthesiology and Pediatrics, The Ohio State University, Columbus, Ohio

ELSEVIER

Table of Contents

[Instructions for online access](#)

[Cover image](#)

[Title Page](#)

[Copyright](#)

[Contributors](#)

[Preface](#)

[Section I Pediatric Critical Care: The Discipline](#)

[Chapter 1 History of Pediatric Critical Care Medicine*](#)

[Evolution of Modern Medicine](#)

[Anatomy and Physiology](#)

[Resuscitation and Ventilatory Support](#)

[Poliomyelitis and Creation of the First Intensive Care Units](#)

[Definitions](#)

[First Pediatric Intensive Care Units](#)

[Central Role of Critical Care Nursing](#)

[Role of Pediatric Anesthesiologists and Pediatricians in Founding Pediatric Critical Care Medicine](#)

[Growth of Pediatric Critical Care Medicine](#)

[Cost of Success in Pediatric Critical Care Medicine](#)

Around the World
High-Mortality Countries
Summary
Acknowledgments
References

Chapter 2 High-Reliability Pediatric Intensive Care Unit

Introduction
PICU as System
Models of Critical Care Delivery
Summary
References

Chapter 3 Subspecialization Within Pediatric Critical Care Medicine

Early History
Adult Subspecialization Within Critical Care
Subspecialized Pediatric Intensive Care Units
Cardiac Intensive Care
Neurocritical Care
Adequate “Dose” of Subspecialty Training
Impact on Research
References

Chapter 4 Critical Communication in the Pediatric Intensive Care Unit

Intensive Care Unit Design
Medical Record
Huddles
Checklists
Rounds
Closed-Looped Communication
Transitions of Care

Medical Training

Debriefing

Team Training

Conclusion

References

Chapter 5 Professionalism in Pediatric Critical Care

The Virtuous Doctor

The Stakes

The Great Paradox of the Medical Profession

Professionalism, the Physician Charter

The PICU as a Site for Medical Education and Lifelong Learning

References

Chapter 6 Nurses in Pediatric Critical Care

Describing What Nurses Do: The Synergy Model

Leadership

Nursing Research

Summary

References

Chapter 7 Research in Pediatric Critical Care

Strengths, Weaknesses, Opportunities, and Threats to Pediatric Critical Care Research

Strengths of Pediatric Critical Care Research

Weaknesses of Pediatric Critical Care Research

Opportunities for Pediatric Critical Care Research

Threats to Pediatric Critical Care Research

Conclusions

References

Chapter 8 Proving the Point

Evidence-Based Medicine Process

Study Types

Levels of Evidence

Challenges to Evidence-Based Medicine

Conclusion

References

Chapter 9 Prediction Tools for Short-Term Outcomes Following Critical Illness in Children

Introduction

Historical Perspective

Methods

Prediction Tools for Assessment of Mortality Risk

Next Generation: Morbidity and Mortality Prediction—Trichotomous Outcome

Future Directions—Prediction Tools for Decision Support

References

Chapter 10 Long-Term Outcomes Following Critical Illness in Children

Mortality Reduction: The First Frontier for Critical Care Medicine

Mitigating Long-Term Morbidity: The Next Frontier for Pediatric Critical Care Medicine

Metrics for Patient-Centered Outcomes: Functional Status and Health-Related Quality of Life

Novel Approaches to Improving Long-Term Outcomes for PICU Survivors

Conclusions

References

Chapter 11 Safety and Quality Assessment in the Pediatric Intensive Care Unit

Brief Consideration of the Relationship Between Safety and Quality

State of Safety and Quality in Pediatric Intensive Care Units

Fundamentals of Quality Improvement and Patient Safety: Systems Thinking

Fundamentals of Patient Safety With an Introduction to Safety I and Safety II

Patient Safety in the Pediatric Intensive Care Unit: Past, Present, and Future

Conclusions

References

Chapter 12 Information Technology in Critical Care

Digital Infrastructure in Health Care

Electronic Health Record

Clinical Decision Support

Patient Safety and Technology in the ICU

Privacy and Security of Health Information

Telemedicine

“Big Data” in Critical Care

Conclusion and Future Directions

Acknowledgments

References

Chapter 13 Building Partnerships

Definition of “Family”

Historical Evolution of Patient- and Family-Centered Care

Fundamental Needs of Patients and Families in the ICU

Core Principles of Patient- and Family-Centered Care

Patient- and Family-Centered Care Improves Outcomes for All Stakeholders

Overcoming Barriers and Challenges to Patient- and Family-Centered Care in the ICU

Summary

References

Chapter 14 Ethics in Pediatric Intensive Care

Defining Bioethics

Approach to Bioethics Dilemmas in the PICU

Ethics of Patient and Surrogate Decision Making

Other Ethical Issues in the PICU

Goals for the Ethical Practice of the Intensivist

References

Chapter 15 Ethical Issues in Death and Dying

Decision Making at the End of Life

Withholding and Withdrawing of Life-Sustaining Treatments

Death Determination

References

Chapter 16 Palliative Care in the Pediatric Intensive Care Unit

Introduction

Palliative Care Consults in the PICU

Epidemiology of Pediatric Death in the PICU

Communication

Limitation of Interventions

Pain and Symptom Management

Practical Aspects of Care at the End of Life

Care of Family and Staff After a Child's Death

References

Chapter 17 Process of Organ Donation and Pediatric Donor Management

Introduction

Role of the Pediatric Intensivist and Critical Care Team in the Process of Organ Donation

Determination of Neurologic Death

Brain Death Physiology

Physiologic Considerations in the Management of the Pediatric Organ Donor

Treatment of Hemodynamic Instability

Hormonal Replacement Therapy

Management of Pulmonary Issues for the Potential Pediatric Organ Donor

Fluid and Electrolyte Disturbances

Diabetes Insipidus

Oliguria

Glucose, Potassium, and Calcium Derangements

Coagulation Abnormalities and Thermoregulatory Instability

Medical Examiner/Coroner Issues and Organ Donation for Children
Donation After Circulatory Death
Contraindications to Organ Donation
Evolving Areas of Transplantation
Summary
References

Chapter 18 Pediatric Transport

Adult-Oriented Medical Systems Frequently Fail Children
Components of a Specialized Interfacility Transport Team
Referring Hospital Responsibilities
Summary
References

Chapter 19 Pediatric Vascular Access and Centeses

Intraosseous Infusion
Arterial Catheter Placement
Pericardiocentesis
Umbilical Arterial Catheter and Umbilical Venous Catheter Placement
Central Venous Line Placement
Peripherally Inserted Central Venous Catheters
Thoracentesis and Tube Thoracostomy
Paracentesis
References

Chapter 20 Emerging Role of Ultrasonography in the Pediatric Intensive Care Unit

Ultrasound Physics and Basics of Image Optimization
Procedural Guidance
Drainage Procedures
Lumbar Puncture
Diagnostic Modalities

Conclusion

References

Chapter 21 Pediatric Critical Care in Resource-Poor Settings

Child Mortality Rates

Cost of Intensive Care

Ethics of Intensive Care in Resource-Poor Settings

Strengthening Critical Care Infrastructure

Critical Illness During Disease Outbreaks

How to Develop an ICU in Low- to Middle-Income Countries

Importance of Critical Care Research in Limited Resource Settings

References

Chapter 22 Educating the Intensivist

Adult Learning

Requirements

Acknowledgment

References

Chapter 23 Lifelong Learning

Lifelong Learning

Adult Learning Theory

Applying Adult Learning Theory to Medical Education (Learner Assessment Drives Teaching Methods)

Undergraduate Medical Education

Exploration of Medical School Progression According to Competency by the American Association of Medical Colleges With the Education in Pediatrics Across the Continuum and Entrustable Professional Activities Pilots

Graduate Medical Education

Beyond Undergraduate Medical Education and Graduate Medical Education

New Methods of Assessment

Current Controversies, Future Challenges

Conclusions

References

Chapter 24 Public Health Emergencies and Emergency Mass Critical Care

Basic Concepts

Pediatric Disaster Timeline

Emergency Department Phase

Intensive Care Unit Phase

PICU Operations in a Gradual-Onset and Sustained Public Health Emergency

Critical Care in Specific Types of Public Health Emergencies

References

Section II Cardiovascular System

Chapter 25 Structure and Function of the Heart

Anatomic Development and Structure

Physiologic Development and Function

Acknowledgment

References

Chapter 26 Regional Peripheral Circulation

General Features

Regional Circulations

Conflicting Needs of Regional Circulations

References

Chapter 27 Endothelium and Endotheliopathy

Normal Endothelial Function

Endothelial Cell Dysfunction

Biomarkers of Endothelial Activation

Conclusions

References

Chapter 28 Principles of Invasive Monitoring

- Role of Invasive Hemodynamic Monitoring
- Indications for Invasive Hemodynamic Measurements
- Principles of Measurement
- Invasive Techniques
- Monitoring Techniques with the Pulmonary Artery Catheter
- Catheter Placement
- Measurement of Cardiac Output
- Calculation of Oxygen Delivery and Consumption
- Novel Monitoring Devices
- Conclusions
- References

Chapter 29 Assessment of Cardiovascular Function

- Cardiovascular Function
- Quantity of Therapy
- Variables That Determine Tissue Oxygenation
- Monitoring Tissue Oxygenation
- Assessing Variables That Affect the Quantity of Therapy
- Physiology of the Patient with a Single Ventricle
- References

Chapter 30 Myocardial Dysfunction, Extracorporeal Life Support, and Ventricular Assist Devices

- Introduction
- Pediatric Heart Failure
- Mechanical Circulatory Support in Pediatric Patients
- Extracorporeal Life Support
- Ventricular Assist Devices
- Patient Selection and Management
- Basic Management of the Ventricular Assist Device Patients

Mechanical Circulatory Support and Single Ventricle

Outcomes

Current Perspective and Future Directions

Conclusions

References

Chapter 31 Echocardiographic Imaging

Introduction

Diagnosis of Structural Defects

Ventricular Function

Assessing Volume Status

Measuring Valve Function

Evaluating Pulmonary Hypertension

Assessing Pericardial Effusion

Vascular

Catheter Manipulation

Devices

Cardiovascular Communications and Physiology

Summary

References

Chapter 32 Diagnostic and Therapeutic Cardiac Catheterization

Catheterization Laboratory Environment

Hemodynamic and Oxygen Saturation Data

Assessment of Critical Illness

Transcatheter Radiofrequency Ablation

Congenital Heart Disease

Cardiac Catheterization and Extracorporeal Membrane Oxygenation

Acknowledgment

References

Chapter 33 Pharmacology of the Cardiovascular System

Mechanisms of Response

Acknowledgments

References

Chapter 34 Cardiopulmonary Interactions

Effects of Ventilation on Circulation

Effects of Cardiovascular Function on Respiration

References

Chapter 35 Disorders of Cardiac Rhythm

Classification of Arrhythmias

Approach to Diagnosis

Treatment of Rhythm Disturbances

Approach to Therapy

Specific Arrhythmias

References

Chapter 36 Shock States

Definition and Physiology

Recognition and Assessment of the Shock State

Treatment of Shock

Multisystem Effects of Shock

Functional Classification and Common Underlying Etiologies

Obstructive Shock

Distributive Shock

Septic Shock

Summary

References

Chapter 37 Pediatric Cardiopulmonary Bypass

Background

Equipment and Preparation for Cardiopulmonary Bypass

Cardiopulmonary Bypass

References

Chapter 38 Critical Care After Surgery for Congenital Cardiac Disease

Introduction

Neonatal Considerations

Preoperative Care

Postoperative Care

Critical Care Management of Selected Specific Lesions

Summary

Acknowledgment

References

Chapter 39 Cardiac Transplantation

Critical Care of the Pediatric Patient Waiting for Heart Transplantation

Management of the Potential Heart Donor

Critical Care Management of the Orthotopic Heart Transplant Recipient

Complications of Immune Suppression in Heart Transplant Recipients Occurring in the Pediatric Intensive Care Unit

Future Management Strategies for Critical Care of Infants and Children With Cardiopulmonary Failure

References

Chapter 40 Acute and Chronic Heart Failure

Heart Failure

Definition

Causes of Heart Failure

Physiologic Consideration in the Patient With Heart Failure

Assessment of the Patient With Heart Failure

Diagnostic Studies in Patients With Heart Failure

Management of Low Cardiac Output Syndrome
Pharmacology of Heart Failure
Mechanical Circulatory Support
Heart Transplantation
Conclusion
References

Chapter 41 Physiologic Foundations of Cardiopulmonary Resuscitation

Mechanisms of Blood Flow
Newer Cardiopulmonary Resuscitation Techniques
Pharmacology
Vasopressin
Management of Ventricular Fibrillation
Future Directions
References

Chapter 42 Performance of Cardiopulmonary Resuscitation in Infants and Children

Four Phases of Cardiac Arrest
Epidemiology of Pediatric Cardiac Arrest
Interventions During the Low-Flow Phase: Cardiopulmonary Resuscitation
Medications Used to Treat Cardiac Arrest
Postresuscitation Myocardial Dysfunction
Other Considerations
Ventricular Fibrillation and Ventricular Tachycardia in Children
Summary
References

Section III Respiratory System

Chapter 43 Structure and Development of the Upper Respiratory System in Infants and Children

Developmental Anatomy of the Upper Airway

Anatomy and Physiology of the Upper Airway

Acknowledgment

Key References

Chapter 44 Structure and Development of the Lower Respiratory System in Infants and Children

Lower Respiratory System

Lung Circulation

Summary

Acknowledgments

References

Chapter 45 Physiology of the Respiratory System

Physiology of the Respiratory System

Flow Resistance of the Respiratory System

Dynamic Change in Airway Caliber During Respiration

Applied Forces

Interactions Between Lungs and Chest Wall

Time Constant of Emptying

Physiology of Positive Pressure Mechanical Ventilation

Gas Exchange

Alveolar Ventilation

References

Chapter 46 Noninvasive Respiratory Monitoring and Assessment of Gas Exchange

Pulse Oximetry

Principles of Pulse Oximetry

Validation

Sources of Error

Probe Placement

Capnometry and Capnography

Physiologic Basis
Clinical Applications
Operating Principles of Capnometry
Differential Diagnosis of Abnormal Capnograms
Transcutaneous Monitoring
Oxygen Monitoring
Carbon Dioxide Monitoring
Conclusion
References

Chapter 47 Overview of Breathing Failure

Physiology of Breathing
Controls of Breathing
Breathing Failure
Breathing Failure From Lung Disease
Conclusion
References

Chapter 48 Ventilation/Perfusion Inequality

Distribution of Ventilation
Distribution of Perfusion
Fractal Model of Pulmonary Blood Flow and Ventilation
Fractal Model of the Pulmonary Ventilation
 V_A/Q Abnormalities in Pulmonary Disease
Therapeutic Considerations
References

Chapter 49 Mechanical Dysfunction of the Respiratory System

Work, Power, and Energy Expenditure in the Respiratory System
Determinants of Respiratory Work
Nondissipative Phenomena: Elastic Behavior of the Respiratory System

Dissipative Phenomena: Resistive Behavior of the Respiratory System
Determinants of Regional Gas Flow Distribution in the Lungs
Restrictive and Obstructive Respiratory Disease
Determinants of Respiratory Efficiency
Conclusion
References

Chapter 50 Specific Diseases of the Respiratory System

Initial Management
Congenital Malformations
Laryngomalacia
Laryngeal Webs, Stenosis, and Tumors
Vascular Impingement on the Trachea
Bronchomalacia and Intrathoracic Tracheomalacia
Infectious Processes
Laryngotracheobronchitis
Epiglottitis
Peritonsillar Abscess
Retropharyngeal Abscess
Bacterial Tracheitis
Laryngeal Papillomatosis
Vocal Cord Paralysis
Intrathoracic Mass Lesions Causing Respiratory Obstruction
Trauma
Laryngotracheal (Subglottic) Stenosis
Foreign Body Aspiration
Traumatic Injury to the Airway
Burn Injury to the Upper Airway
Angioedema
Tracheostomy
Postoperative Nursing Care

Complications

Decannulation

References

Chapter 51 Pediatric Acute Respiratory Distress Syndrome

Introduction

Clinical Features: Pathophysiology

Definition

Pathobiology

Ventilator Management

Pulmonary Ancillary Therapies

Nonpulmonary Therapies

Noninvasive Support

Extracorporeal Life Support

Morbidity and Outcomes

References

Chapter 52 Ventilator-Induced Lung Injury

Evidence for Ventilator-Induced Lung Injury

Roles of Tidal Volume, Positive End-Expiratory Pressure, and Overall Lung Distention

Possible Mechanisms of Ventilator-Induced Lung Injury

New Insights in Ventilator-Induced Lung Injury

Strategies to Reduce Ventilator-Induced Lung Injury: Use of the Pressure-Volume Curve and Analysis of the Mechanics of the Respiratory System

Strategies to Reduce Ventilator-Induced Lung Injury: Mechanical Measures

Conclusion and Clinical Applications

References

Chapter 53 Asthma

Epidemiology and Risk Factors

Pathophysiology

Clinical Assessment

Laboratory Data
Electrocardiography
Spirometry
Treatment
Management in the Intensive Care Unit
Mechanical Ventilation
Antibiotics
Bronchoscopy
Extracorporeal Life Support
Prognosis
References

Chapter 54 Neonatal Respiratory Disease

Lung Maturation and Physiologic Changes at Birth
Acute or Early-Onset Respiratory Disorders
Congenital Malformations of the Lung
Special Treatment Considerations for Acute Respiratory Failure
Chronic Pulmonary Disease
Nonpulmonary Conditions That Result in Respiratory Disease
Metabolic Disorders
References

Chapter 55 Pneumonitis and Interstitial Disease

Pathogenesis
Pathophysiology
Diagnosis
Bacterial Pneumonitis
Viral Pneumonitis
Fungal Pneumonitis
Primary Pulmonary Fungi
Opportunistic Pulmonary Mycoses

Pneumocystis carinii Pneumonia
Chemical Pneumonitis
Idiopathic Interstitial Lung Disease
Pediatric Pulmonary Hemorrhage
Summary
References

Chapter 56 Diseases of Pulmonary Circulation

Etiology and Treatment of Pulmonary Hypertension
Transitional Circulation
Persistent Pulmonary Hypertension of the Newborn
Management of iNO-Resistant PPHN
Prostaglandin E1 (PGE1)
Conclusions
References

Chapter 57 Mechanical Ventilation and Respiratory Care

Introduction
Applied Respiratory Physiology
Indications for Mechanical Ventilation
Design and Functional Characteristics of Ventilators
Modes of Ventilation
Ventilation for Selected Underlying Pathophysiology
Patient-Ventilator Asynchrony
High-Frequency Ventilation
Adverse Effects of Mechanical Ventilation
Specialty Gases
Respiratory Care During Mechanical Ventilation
Weaning From Mechanical Ventilation
Home Respiratory Care
References

Chapter 58 Noninvasive Ventilation

Introduction

Historical Perspective

Indications

Short-Term Noninvasive Ventilation

Adult Studies on the Short-Term Use of Noninvasive Ventilation

Pediatric and Neonatal Studies

Acute Short-Term Indications

Long-Term Noninvasive Ventilation

Physiologic Effects and Outcomes of Long-Term Noninvasive Ventilation

Interfaces

Equipment

Optimizing Patient-Ventilator Interaction

Ventilator Settings

Complications and Concerns During Short-Term Noninvasive Ventilation

Circuit and CO₂ Rebreathing

Negative Pressure Ventilation

Summary

References

Chapter 59 Extracorporeal Life Support

Materials and Methods

Patient Populations Treated With Extracorporeal Life Support

Patient Selection Criteria

Physiology of Extracorporeal Life Support: Gas Exchange and Oxygen Delivery

Patient Management

Weaning From Extracorporeal Membrane Oxygenation

Complications

The Future

References

Section IV Central Nervous System

Chapter 60 Structure, Function, and Development of the Nervous System

Major Cell Types

Intercellular Communication in the Nervous System

Neurotransmitter Systems

Major Anatomic Organization of the Nervous System

Blood-Brain Barrier

Ventricles and Cerebrospinal Fluid

Vasculature in the Central Nervous System

Emerging Characterization of the “Lymphatic” Circulation in the CNS

Developmental Processes Relevant to Pediatric Critical Care Medicine

New Insights in Neurodevelopment Relevant to Pediatric Critical Care

Conclusion

References

Chapter 61 Brain Malformations

Hydrocephalus

Arachnoid Cysts

Chiari Malformations

Dandy-Walker Malformation

Encephalocele and Meningocele

Spinal Dysraphism

References

Chapter 62 Neurologic Assessment and Monitoring

Overview and Basic Principles of Pediatric Critical Care Neurology

Goals of the Neurologic Examination in the Pediatric Intensive Care Unit

Neuroimaging

Integrating Neurologic Monitoring Data

References

Chapter 63 Neuroimaging

- Imaging Modality Overview
- Preterm and Term Neonate Imaging
- Stroke in the Older Infant/Child
- Vascular Malformations
- Central Nervous System Infection
- Demyelinating Disease
- Trauma
- Hydrocephalus
- Tumor
- Seizures
- Conclusion
- References

Chapter 64 Pediatric Neurocritical Care

- Historical Context
- Rationales for Development of Pediatric Neurocritical Care
- Challenges, Controversies, and the Scope of Pediatric Neurocritical Care
- Future of Pediatric Neurocritical Care
- References

Chapter 65 Coma and Depressed Sensorium

- Pathophysiology
- Anatomy of Arousal and Ascending Reticular Activating System
- States of Impaired Sensorium
- Identification of Cause
- Initial Assessment and Immediate Resuscitation
- Focused Neurologic Examination
- Respiratory Pattern
- Eye Examination
- Motor Examination

Focal Neurologic Lesions Could Be Supratentorial or Subtentorial
Presentation of Nonfocal Neurologic Lesions
Herniation Syndromes
Diagnostic Evaluation
Therapeutic Intervention
Outcome
Ethical Considerations
References

Chapter 66 Intracranial Hypertension and Brain Monitoring

Clinical Background
Physiology of the Intracranial Vault
Measurement of Intracranial Pressure
Analysis of Intracranial Pressure
Invasive Intracranial Pressure Monitoring in Clinical Care
Clinical Utility of Intracranial Pressure Monitoring With Other Monitoring Modalities
Monitoring and the Postinsult Natural History
Newer Modalities Supplementing Monitoring of Intracranial Pressure
References

Chapter 67 Status Epilepticus

Proportional Incidences for Symptomatic Epilepsies According to Age and Etiology
Seizure Types and Classification
Seizures Commonly Encountered in the Pediatric Intensive Care Unit
Posttraumatic Epilepsy
Pharmacotherapy
Refractory Status Epilepticus
Surgical Options
Morbidity and Mortality
Acknowledgment
References

Chapter 68 Hypoxic-Ischemic Encephalopathy

Epidemiology

Cellular and Molecular Pathobiology

Clinical Pathophysiology

Clinical Outcome After Pediatric Cardiac Arrest

Response of the Immature Brain to Cardiac Arrest

Treatment of Cardiac Arrest

Current and Novel Therapies

Futuristic Approaches

Summary

Acknowledgment

References

Chapter 69 Pediatric Stroke and Intracerebral Hemorrhage

Significance

Arterial Ischemic Stroke

Etiologies and Risk Factors

Pathophysiology

Presentation

Neuroimaging

Laboratory Evaluation

Treatment

Cerebral Sinus Venous Thrombosis

Spontaneous Intracranial Hemorrhage

General Care of the Child With Intracerebral Hemorrhage

Prognosis

Conclusion

References

Chapter 70 Central Nervous System Infections and Related Conditions

Introduction

Bacterial Meningitis
Clinical Manifestations
Subdural Empyema
Brain Abscesses
Viral Meningoencephalitis
Conclusion
References

Chapter 71 Acute Neuromuscular Diseases and Disorders

Guillain-Barré Syndrome
Myasthenia Gravis
Congenital and Transient Neonatal Myasthenia Gravis
Tick Paralysis
Periodic Paralysis
Hypokalemic Periodic Paralysis
Hyperkalemic Periodic Paralysis
Botulism
Diphtheria
Acute Intermittent Porphyria
Spinal Muscular Atrophy
Poliomyelitis
Polio-Like Syndromes
Organophosphate and Carbamate Poisoning
References

Section V Renal, Fluids, Electrolytes

Chapter 72 Renal Structure and Function

Renal Development
Renal Anatomy
Renal Vasculature

Nephron Unit

Tubular Anatomy

Summary

References

Chapter 73 Fluid and Electrolyte Issues in Pediatric Critical Illness

Overview

Sodium

Hyponatremia

Potassium

Hypokalemia

Hyperkalemia

Magnesium

Hypomagnesemia

Hypermagnesemia

Calcium

Hypocalcemia

Hypercalcemia

Hypophosphatemia

Hyperphosphatemia

References

Chapter 74 Tests of Kidney Function in Children

Assessment of Glomerular Function and Injury

Renal Clearance Techniques

Plasma Disappearance Techniques

Renal Inulin Clearance Compared With Other GFR Measurement Techniques

Plasma Markers

Estimating Equations

Neonatal Renal Function

Other Novel Biomarkers of Acute Kidney Injury Under Investigation

Tubular Function

References

Chapter 75 Glomerulotubular Dysfunction and Acute Kidney Injury

Acute Kidney Injury Pathophysiology

Classification of Acute Glomerulotubular Dysfunction

Treatment of Acute Kidney Injury

Acute Kidney Injury: Clinical Impact

Specific Kidney Diseases That May Lead to Acute Kidney Injury

Conclusions

References

Chapter 76 Acid-Base Disorders

Overview of Acid-Base Physiology

Tools for Interpreting Acid-Base Disorders

Conceptual and Practical Integration of the Tools for Assessing Acid-Base Balance

Metabolic Acidosis

Metabolic Alkalosis

Respiratory Acid-Base Derangements

Mixed Acid-Base Derangements

Acid-Base Balance in Special Situations: Hypothermia

Summary

References

Chapter 77 Renal Pharmacology

Kidney Function and Drug Disposition

Drug Dosing in Kidney Disease

Kidney as a Therapeutic Target: Diuretics

Prevention/Reversal of Acute Renal Failure

References

Chapter 78 Pediatric Renal Replacement Therapy in the Intensive Care Unit

Basic Physiology of Dialysis and Ultrafiltration
Peritoneal Dialysis
Intermittent Hemodialysis
Continuous Renal Replacement Therapy
Outcomes of Renal Replacement in Critically Ill Children
Advances in Pediatric Renal Replacement Therapies
Summary
References

Chapter 79 Acute Severe Hypertension

Introduction
Terminology
Etiology
Pathophysiology
Endothelial Homeostasis
Sympathetic Nervous System Activation
Renin-Angiotensin-Aldosterone System
Nitric Oxide
Volume Overload
Clinical Presentation
Blood Pressure Measurement and Other Monitoring
Pharmacologic Therapy
Special Situations
Summary
Acknowledgment
References

Section VI Metabolism, Endocrinology, and Nutrition

Chapter 80 Cellular Respiration

Pathways of Cellular Respiration

Impaired Cellular Respiration in Critical Illness

Clinical Assessment of Oxygen Utilization

Lactate

Venous Oxygen Saturation

Microdialysis

Near-Infrared Spectroscopy

Optical Spectroscopy

Tissue Oxygen Tension

NADH Fluorometry

Magnetic Resonance Spectroscopy

Blood Mitochondrial DNA

Mitochondrial- and Bioenergetic-Targeted Therapy in Critical Illness

Antioxidants

Nitric Oxide Synthase Inhibitors

Glycemic Control

Substrate Provision

Mitochondrial Biogenesis and Mitophagy

Membrane Stabilizers

Hibernation

Conclusions

References

Chapter 81 Biology of the Stress Response

Introduction

Definitions and Historical Perspectives

Stress System Primary Elements

Stress Response

Stress Response in Critical Illness

Recommendations and Conclusions

References

Chapter 82 Inborn Errors of Metabolism

Pathophysiology of Inborn Errors of Metabolism

Inheritance of Inborn Errors of Metabolism

Signs and Symptoms of Inborn Errors of Metabolism

Laboratory Evaluation of Suspected Inborn Errors of Metabolism

Postmortem Evaluation of a Child With Suspected Inborn Errors of Metabolism

Emergency Treatment of Children With Suspected Inborn Errors of Metabolism

Classification of Inborn Errors of Metabolism by Clinical Presentation

Metabolic Acidosis

Hypoglycemia

Cardiomyopathy and Inborn Errors of Metabolism

Metabolic Myopathies and Rhabdomyolysis

Neonatal Screening

Conclusion

References

Chapter 83 Genetic Variation in Health and Disease

Introduction

Sequence Variation in Health and Disease

Scale of Mutational Event

Genetic Variation and Protein Synthesis

Developmental Timing of Mutations and Consequences

Genetic Variation in Mendelian and Complex Traits

High-Throughput Technologies—the Good and the Bad

Genome-Wide Association Studies

Looking Toward the Future

References

Chapter 84 Molecular Foundations of Cellular Injury

Cell Death

Mechanisms of Cell Death

How Do Cellular Death Mechanisms Propagate Critical Illness?

References

Chapter 85 Common Endocrinopathies in the Pediatric Intensive Care Unit

Hypothalamic-Pituitary-Adrenal Axis

Cortisol Biochemistry

Actions of Cortisol

Assessing the Cortisol Stress Response

Adrenal Insufficiency in the Intensive Care Unit

Corticosteroid Side Effects

Alterations of Glucose Homeostasis

Hyperglycemia

Glucose Measurement

Future Directions

Hypoglycemia

Alterations of Thyroid Hormone in Critical Illness

Acknowledgment

References

Chapter 86 Diabetic Ketoacidosis

Etiology, Definition, and Presentation

Epidemiology

References

Chapter 87 Nutrition in the Critically Ill Child

Introduction

Malnutrition in the Pediatric Critically Ill Patient

Assessment of Nutritional Status

Body Composition

Biochemical Assessment

Underfeeding and Overfeeding in the Pediatric Intensive Care Unit

Lipid Requirements
Micronutrient Requirements
Refeeding Syndrome
Enteral Nutrition in Critically Ill Children
Immune-Enhancing Diets for the Critically Ill Child
Parenteral Nutrition
Nutritional Support of Obese Critically Ill Children
Guidelines for Pediatric Critical Care Nutrition
Conclusions
References

Section VII Hematology-Oncology

Chapter 88 Structure and Function of Hematopoietic Organs

Structure and Function of the Bone Marrow
Hematopoiesis
Lymphopoiesis
References

Chapter 89 Erythron in Critical Illness

Introduction
Oxygen Transport
Carbon Dioxide Transport
Biophysical Factors Influencing Gas Transport
Regulation of Blood Flow Distribution by Red Blood Cells
Energy Metabolism in Red Blood Cells
Acquired Red Blood Cell Injury, Eryptosis, and Clearance
Blood Flow Disruption During Critical Illness by Maladaptive Red Blood Cell–Based Signaling
References

Chapter 90 Hemoglobinopathies

Perspective

Globin Gene Loci

Sickle Cell Disease

Thalassemia

References

Chapter 91 Coagulation and Coagulopathy in Critical Illness

Introduction

Overview of Hemostasis

Approach to the Patient With an Actual or Suspected Coagulation Disorder

Potentially Serious Acquired Bleeding Disorders

Iatrogenic Coagulopathy

Platelet Disorders

Selected Disorders

References

Chapter 92 Thrombosis in Pediatric Intensive Care

Developmental Hemostasis

Etiology and Epidemiology

Clinical Features

Diagnosis

Management

Thromboprophylaxis in the Pediatric Intensive Care Unit

Conclusions

Acknowledgment

References

Chapter 93 Transfusion Medicine in the Pediatric Intensive Care Unit

Red Blood Cells

Red Blood Cell Transfusion: Why and Why Not

Transfusion of Red Blood Cells: Indications (When)

Types of Packed Red Blood Cell Products

Transfusion of Red Blood Cells: How

Plasma

Platelets

Cryoprecipitate

Transfusions Reactions and Complications

Conclusion

References

Chapter 94 Hematology and Oncology Problems in the Intensive Care Unit

Hematologic Emergencies

Oncologic Emergencies

References

Chapter 95 Critical Illness Involving Children Undergoing Hematopoietic Cell Transplantation

Overview

Sources of Hematopoietic Progenitor Cells and Identification of Donors

Indications and Outcomes

Transplant Procedure

Nutritional Support in the Critically Ill Hematopoietic Progenitor Cell Transplantation Patient

References

Section VIII Gastrointestinal System

Chapter 96 Gastrointestinal Structure and Function

Introduction

Intestinal Structure, Digestion, Absorption of Nutrients, Water, and Electrolytes

Water and Solute Transport Across Intestinal Epithelium

Pancreas

Hepatobiliary System

References

Chapter 97 Disorders and Diseases of the Gastrointestinal Tract and Liver

Gastrointestinal Evaluation of the Critically Ill Child

Life-Threatening Complications of Gastrointestinal Disorders

References

Chapter 98 Applications of Gastrointestinal Pharmacology

Stress Ulcer Prophylaxis

Mechanism of Stress-Related Mucosal Damage

Epidemiology and Risk Factors for Stress Ulceration

Options for Stress Ulcer Prophylaxis

Infectious Complications of Stress Ulcer Prophylaxis

Histamine-2 Receptor Antagonists

Proton Pump Inhibitors

Gastrointestinal Hemorrhage

Antibiotic-Associated Diarrhea

Rectal Administration of Medication

Nausea and Vomiting

Acknowledgment

References

Chapter 99 Acute Liver Failure, Liver Transplantation, and Extracorporeal Liver Support

Introduction

Acute Liver Failure

Liver Transplantation

References

Chapter 100 Acute Abdomen

Anatomic and Physiologic Considerations

Physical Exam of the Abdomen

Laboratory Tests

Imaging Options

Abdominal Conditions Requiring Treatment in the Intensive Care Unit

Other Specific Conditions

Abdominal Compartment Syndrome

Intraabdominal Abscess

Intestine as a Source of Sepsis

References

Section IX Immunity and Infection

Chapter 101 Innate Immune System

Regulation of the Innate Immune Response

Clinical Manifestations of the Innate Immune Response in the Intensive Care Unit

Therapeutic Targets of the Innate Immune System

Therapeutic Questions Arising From the Innate Immune System

Conclusion

References

Chapter 102 Adaptive Immunity

Introduction

Lymphocytes Develop to Recognize Specific Antigens

B-Cell Activation Leads to Antibody Secretion: The Humoral Immune Response

Effector T Cells Direct Cell-Mediated Immunity

Additional T-Cell Subtypes

Adaptive Immunity in the Intensive Care Unit

Summary

References

Chapter 103 Congenital Immunodeficiency

Introduction

Basic Framework for Understanding the Immune System

Specific Disorders Likely to Be Encountered in Pediatric ICU

Radiation Sensitive Disorders: Ataxia Telangiectasia and Nijmegen Breakage Syndrome

Laboratory Evaluation of the Immune System

Treatment of Immune System Disorders

References

Chapter 104 Acquired Immune Dysfunction

Immune Function and Critical Illness

Malnutrition and Immune Function

Transfusions

Immunosuppressive Medications

Uremia

Infectious Agents Other Than HIV

HIV Infection and AIDS

Pulmonary Complications and Respiratory Failure

Upper Airway Obstruction

Cardiovascular Complications

Renal Failure

Abdominal Complications

Hematologic Complications

Malignancies

Neurologic Complications

Infections of CNS

Occupational HIV Exposure

Summary

References

Chapter 105 Immune Balance in Critical Illness

Introduction

Innate and Adaptive Immunity
Proinflammatory and Antiinflammatory Responses
CARS and Clinical Outcomes
Immune Modulation in Pediatric ICU
Immune Monitoring in ICU
Conclusion
References

Chapter 106 Pediatric Rheumatic Disease

Rheumatic Diseases: Clinical Presentation, Diagnosis, and Treatment
Rheumatic Diseases: Conditions and Complications in the ICU
Macrophage Activation Syndrome
Central Nervous System Involvement
Complications of the Treatment of Rheumatic Diseases
Summary
Acknowledgments
References

Chapter 107 Bacterial and Fungal Infections, Antimicrobials, and Antimicrobial Resistance

General Considerations for Antibiotic Therapy
Antibiotic Classes
Antibiotic Resistance
Antibiotic Resistance and Infections in the Pediatric Intensive Care Unit
Antimicrobial Stewardship
Summary
References

Chapter 108 Life-Threatening Viral Diseases and Their Treatment

Myocarditis
Acute Liver Failure
Viral Pneumonia/Pneumonitis

Central Nervous System Infections
Exotic Viral Diseases
Diagnosing Viral Disease
Treatment for Viral Infections
References

Chapter 109 Infectious Syndromes in the Pediatric Intensive Care Unit

Meningococcal Infection
Toxic Shock Syndrome
Necrotizing Fasciitis
Invasive Pneumococcus
Rocky Mountain Spotted Fever
Hantavirus
Acknowledgments
References

Chapter 110 Hospital-Acquired Infection in the Pediatric Intensive Care Unit

Burden of Illness and Scope of the Problem
Epidemiologic Principles of Infection Prevention and Control
Infection Prevention and Control Measures
Specific Health Care–Associated Infection Syndromes in the Pediatric Intensive Care Unit
Acknowledgments
References

Chapter 111 Sepsis

Introduction
Epidemiology
Definitions
Clinical Presentation
Pathogenesis
Genomic Medicine and Sepsis

Treatment Strategies

Case for More Effective Stratification in Pediatric Septic Shock

Concluding Perspectives

References

Chapter 112 Multiple Organ Dysfunction/Failure Syndrome in Children

Introduction

Inflammation/Coagulation/Immune Dysfunction/Dysregulated Metabolism Hypothesis

Definitions and Scoring

Outcomes

MOF/MODS Phenotypes, Respective Biomarkers, and Therapies (Table 112.1)

Therapeutic Approaches to SIRS/Sepsis/ALI/MOF (Table 112.2)

Time Course of SIRS/Sepsis-Induced MODS/MOF

Summary

References

Section X Environmental Hazards

Chapter 113 Bites and Stings

Snakebites

Widow Spider Bites

Hymenoptera Stings (Bees, Wasps, and Ants)

References

Chapter 114 Heat Injury

Definitions

Epidemiology

Pathophysiology and Pathogenesis of Heat-Related Illnesses

Systemic Clinical Features

Treatment

References

Chapter 115 Accidental Hypothermia

Physiology

Central Nervous System

Cardiovascular

Respiratory

Renal

Coagulation

Treatment

Outcome

References

Chapter 116 Drowning

Definitions

Epidemiology

Pathophysiologic Considerations

Management

Prognosis

References

Chapter 117 Burn and Inhalation Injuries

Types of Burn Injuries

Depth and Extent of the Burn Injury

Early Management of Burn Injuries

Inhalational Injury

Nutritional Support in Burn Patients

Wound Care

Acknowledgment

References

Section XI Pediatric Trauma

Chapter 118 Evaluation, Stabilization, and Initial Management After Multiple Trauma

Prehospital Care and Trauma Team Activation

Trauma Resuscitation

Primary Survey

Secondary Survey

Diagnostic Assessment

Emergency Department Thoracotomy

Stabilization and Definitive Care

Conclusions

Acknowledgments

References

Chapter 119 Severe Traumatic Brain Injury in Infants and Children

Epidemiology

Pathophysiology

History

Signs and Symptoms

Initial Resuscitation

Diagnostic Studies and Monitoring Modalities

Treatment in the Pediatric Intensive Care Unit

Miscellaneous

Linking Rehabilitation and Acute Care

Outcomes

Conclusion

References

Chapter 120 Thoracic Injuries in Children

Epidemiology and Prevention

Anatomic and Physiologic Considerations

Initial Resuscitation and Diagnosis

- Chest Wall Injury
- Lung and Airway Injury
- Traumatic Asphyxia
- Cardiac Injuries
- Esophageal Injury
- Chylothorax
- Diaphragmatic Injury
- Conclusions
- References

Chapter 121 Abdominal Trauma in Pediatric Critical Care

- Mechanisms and Patterns of Injury
- Evaluation and Resuscitation
- Management of Specific Abdominal Injuries
- Acknowledgment
- References

Chapter 122 Child Abuse

- Recognition of Child Abuse
- Skeletal Survey
- Abusive Head Trauma
- Shaken Baby Syndrome
- Inflicted Abdominal and Thoracic Trauma
- Sexual Abuse
- Protocol for the Medical Investigation of Child Abuse
- Fatal Child Abuse
- Documentation and Testifying in Court
- References

Chapter 123 Violence-Associated Injury Among Children

- Physical-Related Injuries in Children

Psychologic Injury and Psychosocial and Behavior–Related Effects
Challenges for Follow-Up and Opportunities for a Teachable Moment
References

Section XII Pharmacology and Toxicology

Chapter 124 Principles of Drug Disposition in the Critically Ill Child

Drug Disposition in Infants and Children
Determinants of Effective Therapy
Pharmacokinetic Principles
Critical Care Therapeutics
References

Chapter 125 Molecular Mechanisms of Drug Actions

Targets for Drug Action
Receptor Type and Regulation
Signal Transduction Mechanisms: Intracellular Messengers and Effectors
Multiple Drug Targets Within an Organ System: The Myocardium
Drug Response and Genetic Polymorphisms
Drug Response and Development
Drug Response and Disease
Conclusion
References

Chapter 126 Adverse Drug Reactions and Drug-Drug Interactions

Adverse Drug Reactions by Organ System
Drug-Drug Interactions
References

Chapter 127 Principles of Toxin Assessment and Screening

Common Agents Involved in Serious Pediatric Poisonings

Resources for the Clinician

General Assessment of the Poisoned Patient

Summary

Additional Readings

References

Chapter 128 Toxidromes and Their Treatment

Opioids

Sedative Hypnotics

Sympathomimetic Agents

Anticholinergic Agents

Cholinergic Agents

Methemoglobinemia

Xenobiotic-Induced Hyperthermia

Metabolic Acidosis With Increased Anion Gap

Acetaminophen (Paracetamol)

References

Section XIII Anesthesia Principles for the Pediatric Intensive Care Unit

Chapter 129 Airway Management

Anatomic Considerations

Basic Airway Management

Establishing a Functional Airway

Endotracheal Intubation

Special Circumstances

Alternative Approaches to the Airway

References

Chapter 130 Anesthesia Effects and Organ System Considerations

Effects of Anesthetic Agents
Local Anesthetic Agents
Neurologic Injury
Intracranial Pressure
Regulation of Cerebral Blood Flow
Effects of Anesthetics on Cerebral Blood Flow
Anesthesia Neurotoxicity in the Developing Brain
References

Chapter 131 Anesthesia Principles and Operating Room Anesthesia Regimens

Introduction
Preoperative Evaluation
NPO Guidelines
Preoperative Medication
Monitoring
Pharmacology of Anesthetic Agents
Intraoperative Anesthetic Care
Postoperative Care
Conclusions
References

Chapter 132 Malignant Hyperthermia

Pathophysiology
Genetics
Clinical Recognition of a Malignant Hyperthermia Episode in Humans
Treatment of an Episode of Malignant Hyperthermia
Course of a Clinical Episode of Malignant Hyperthermia
Evaluation of Patients at Risk
Testing for Malignant Hyperthermia Susceptibility
Neuroleptic Malignant Syndrome and Serotonin Syndrome
Malignant Hyperthermia Association

References

Chapter 133 Neuromuscular Blocking Agents

Introduction

Neuromuscular Junction

Neuromuscular Blocking Agents: Depolarizing Agents

Summary: Neuromuscular Blocking Agents in the PICU

References

Chapter 134 Sedation and Analgesia

Opioids and Analgesia in the Pediatric Intensive Care Unit

Specific Opioid Agonists

Opiate Antagonists

Opiate Tolerance

Benzodiazepines

Specific Benzodiazepines

Flumazenil

Chloral Hydrate

Other Agents for Sedation of the Pediatric Intensive Care Unit Patient

Neuroleptic Malignant Syndrome

Baclofen

Cannabis

Dexmedetomidine

Propofol

Sedation and Analgesia for Procedures

Specific Drugs for Sedation

Sedation-Related Complications

Apoptosis

Pharmacoeconomics

References

Chapter 135 Tolerance, Withdrawal, and Dependency

Introduction

History of Tolerance and Withdrawal in the Intensive Care Unit Setting

Clinical Signs and Symptoms of Withdrawal

Treatment of Withdrawal and Clinical Scoring Systems

Summary

References

Chapter 136 Pediatric Delirium

Introduction

Background

Etiology

Epidemiology

Risk Factors

Clinical Presentation

Diagnosis

Treatment

Underlying Illness

Iatrogenic Factors

Environment

Pharmacotherapy

Prevention

Conclusion

References

Section XIV

Board Review Questions

Reference

References

Reference

Reference

Reference

Reference

References

Reference

Index

Copyright

ELSEVIER

1600 John F. Kennedy Blvd.
Ste 1800
Philadelphia, PA 19103-2899

PEDIATRIC CRITICAL CARE, FIFTH EDITION

ISBN: 978-0-323-37839-0

Copyright © 2017 by Elsevier, Inc. All rights reserved.

No part of this publication may be reproduced or transmitted in any form or by any means, electronic or mechanical, including photocopying, recording, or any information storage and retrieval system, without permission in writing from the Publisher. Details on how to seek permission, further information about the Publisher's permissions policies and our arrangements with organizations such as the Copyright Clearance Center and the Copyright Licensing Agency, can be found at our website: www.elsevier.com/permissions.

This book and the individual contributions contained in it are protected under copyright by the Publisher (other than as may be noted herein).

Notices

Knowledge and best practice in this field are constantly changing. As new research and experience broaden our understanding, changes in research methods, professional practices, or medical treatment may become necessary.

Practitioners and researchers must always rely on their own experience and knowledge in evaluating and using any information, methods, compounds, or experiments described herein. In using such information or methods they should be mindful of their own safety and the safety of others, including parties for whom they have a professional responsibility.

With respect to any drug or pharmaceutical products identified, readers are advised to check the most current information provided (i) on procedures featured or (ii) by the manufacturer of each product to be administered, to verify the recommended dose or formula, the method and duration of administration, and contraindications.

It is the responsibility of practitioners, relying on their own experience and knowledge of their patients, to make diagnoses, to determine dosages and the best treatment for each individual patient, and to take all appropriate safety precautions. To the fullest extent of the law, neither the Publisher nor the authors, contributors, or

editors assume any liability for any injury and/or damage to persons or property as a matter of products liability, negligence or otherwise, or from any use or operation of any methods, products, instructions, or ideas contained in the material herein.

Previous editions copyrighted 2011, 2006, 1998, 1992.

Library of Congress Cataloging-in-Publication Data

Names: Fuhrman, Bradley P., editor.

Title: Pediatric critical care / [edited by] Bradley P. Fuhrman, Jerry J. Zimmerman, Joseph A. Carcillo, Robert S.B. Clark, Monica Relvas, Alexandre T. Rotta, Ann E. Thompson, Joseph D. Tobias.

Other titles: Pediatric critical care (Fuhrman)

Description: Fifth edition. | Philadelphia, PA : Elsevier, [2017] | Includes bibliographical references and index.

Identifiers: LCCN 2016034617 | ISBN 9780323378390 (hardcover : alk. paper)

Subjects: | MESH: Critical Care | Child | Infant

Classification: LCC RJ370 | NLM WS 366 | DDC 618.92/0028—dc23 LC record available at <https://lcn.loc.gov/2016034617>

Legends for Cover Figures:

Figures from left to right:

Schematic depiction of gram-negative bacteremia.

Schematic depiction of Toll-like receptor 4, an element of innate immunity that binds lipopolysaccharide of the gram-negative cell wall (endotoxin), initiating a cascade of intracellular signaling to promote a proinflammatory host response.

Host mRNA expression of the most affected genes in a child with bacterial sepsis.

Red, upregulation; blue, downregulation. Courtesy, Hector Wong.

Alterations in microvascular flow and effective capillary density of the buccal mucosa using orthogonal polarization spectral imaging in a patient with bacterial sepsis.

Senior Content Strategist: Sarah Barth

Senior Content Development Specialist: Laura Schmidt

Publishing Services Manager: Patricia Tannian

Senior Project Manager: Sharon Corell

Book Designer: Patrick Ferguson

Printed in China.

Last digit is the print number: 9 8 7 6 5 4 3 2 1



Contributors

Isaac Josh Abecassis MD

Resident Physician
Department of Neurological Surgery
University of Washington
Seattle, Washington

Rachel S. Agbeko MD, PhD, FRCPCH, FFICM

Consultant in Paediatric Intensive Care
Department of Paediatric Intensive Care
Great North Children's Hospital
The Newcastle upon Tyne Hospitals NHS Foundation Trust
Associate Clinical Lecturer
Institute of Cellular Medicine
Newcastle University
Newcastle upon Tyne
United Kingdom

P. David Adelson MD, FACS, FAAP

Director
Barrow Neurological Institute at Phoenix Children's Hospital
Diane and Bruce Halle Chair of Pediatric Neurosciences
Chief
Pediatric Neurosurgery
Phoenix Children's Hospital
Phoenix, Arizona

Matthew N. Alder PhD, MD

Instructor of Pediatrics, University of Cincinnati College of Medicine
Division of Critical Care Medicine
Cincinnati Children's Hospital Medical Center
Children's Hospital Research Foundation
Cincinnati, Ohio

Omar Al Ibrahim MD

Director
Cutaneous Laser and Cosmetic Surgery
Mohs Micrographic and Reconstructive Surgery
Dermatology

University of Connecticut
Farmington, Connecticut

Melvin C. Almodovar MD

Medical Director
Cardiac Intensive Care Unit
Department of Cardiology
Boston Children's Hospital
Boston, Massachusetts

Alexandra R. Aminoff MD

Pediatric Rheumatology
The Permanente Medical Group
Kaiser Permanente Northern California
Oakland, California

Catherine Amlie-LeFond MD

Director
Pediatric Vascular Neurology Program
Professor
Seattle Children's Hospital/University of Washington
Seattle, Washington

Derek C. Angus MD, MPH, FRCP

Distinguished Professor and Mitchell P. Fink Endowed Chair
Department of Critical Care Medicine
Professor of Critical Care Medicine, Medicine, Health Policy and Management, and
Clinical and Translational Science
University of Pittsburgh Schools of the Health Sciences
Pittsburgh, Pennsylvania

Joan C. Arvedson BS, MS, PhD

Program Coordinator, Feeding and Swallowing Services
Speech Pathology and Audiology
Children's Hospital of Wisconsin
Milwaukee, Wisconsin

Francois Aspesberro MD

Pediatric Critical Care Medicine
Seattle Children's Hospital/University of Washington
Seattle, Washington

John E. Baatz PhD

Professor
Pediatrics - Neonatology
Medical University of South Carolina
Charleston, South Carolina

Harris P. Baden MD

Professor & Chief
Pediatric Cardiac Critical Care
Seattle Children's Hospital/University of Washington
Seattle, Washington

Srinivasarao Badugu MD

Assistant Professor
Department of Pediatrics
Texas Tech University
El Paso, Texas

Adnan M. Bakar MD

Assistant Professor of Pediatrics
Section Head
Pediatric Cardiac Critical Care
Hofstra Northwell School of Medicine
Pediatric Critical Care Medicine
Pediatric Cardiology
Cohen Children's Medical Center of New York
New Hyde Park, New York

Katherine Banker MD

Clinical Assistant Professor
Pediatrics
Critical Care
Seattle Children's Hospital/University of Washington
Seattle, Washington

John L. Bass MD

Professor of Pediatrics
Director
Pediatric Interventional Catheterization
University of Minnesota/Masonic Children's Hospital
Minneapolis, Minnesota

Hülya Bayir MD

Safar Center for Resuscitation Research
Department of Critical Care Medicine
University of Pittsburgh School of Medicine
Children's Hospital of Pittsburgh of UPMC
Pittsburgh, Pennsylvania

Pierre Beaulieu MD, PhD, FRCA

Professor
Departments of Medicine and Anesthesiology
Faculty of Medicine
Université de Montréal
Montreal, Quebec, Canada

Lance B. Becker MD

Director
Center for Resuscitation Science
Perelman School of Medicine at the University of Pennsylvania
Philadelphia, Pennsylvania

Michael J. Bell MD

Professor of Critical Care Medicine, Neurological Surgery, and Pediatrics
Director
Pediatric Neurocritical Care
Director
Pediatric Neurotrauma Center
Associate Director
Safar Center for Resuscitation Research
University of Pittsburgh School of Medicine
Pittsburgh, Pennsylvania

M.A. Bender MD, PhD

Associate Professor
University of Washington
Fred Hutchinson Cancer Research Center
Seattle, Washington

Wade W. Benton PharmD

Executive Director
Medical Affairs
Relypsa
Redwood City, California

Robert A. Berg MD

Russell Raphaely Endowed Chair
Division Chief
Critical Care Medicine
Professor of Anesthesiology
Critical Care and Pediatrics
The Children's Hospital of Philadelphia
Perelman School of Medicine at the University of Pennsylvania
Philadelphia, Pennsylvania

Katherine V. Biagas MD, FCCM, FAAP

Director
Pediatric Critical Care Medicine Fellowship
Associate Professor of Pediatrics
Columbia University Medical Center
New York, New York

Naomi B. Bishop MD

Assistant Professor
Pediatrics

Director
Quality and Patient Improvement
Pediatric Critical Care Medicine
Weill Cornell Medicine
New York, New York

Julie Blatt MD

Professor
Pediatric Hematology Oncology
University of North Carolina
Chapel Hill, North Carolina

Douglas L. Blowey MD

Associate Professor
Pediatrics and Pharmacology
Pediatric Nephrology
University of Missouri—Kansas City/ Children's Mercy Hospital
Kansas City, Missouri

Jeffrey L. Blumer PhD, MD

Professor of Pediatrics
University of Toledo
College of Medicine and Life Sciences
Toledo, Ohio

Robert H. Bonow MD

Resident Physician
Department of Neurological Surgery
University of Washington
Seattle, Washington

Barbara W. Brandom MD

North American MH Registry of MHAUS
Adjunct Professor of Nurse Anesthesia
Retired Professor of Anesthesiology
University of Pittsburgh
Pittsburgh, Pennsylvania

Richard J. Brill MD, FAAP, MCCM

Division of Critical Care Medicine
Department of Pediatrics
Nationwide Children's Hospital
The Ohio State University College of Medicine
Columbus, Ohio

Thomas V. Brogan MD

Professor
Department of Pediatrics
Seattle Children's Hospital/University of Washington

Seattle, Washington

Ronald A. Bronicki MD, FCCM, FACC

Critical Care Medicine and Cardiology
Texas Children's Hospital and Baylor College of Medicine
Houston, Texas

Samuel R. Browd MD, PhD, FAANS, FAAP

Professor
Department of Neurological Surgery
Seattle Children's Hospital/University of Washington
Seattle, Washington

Timothy E. Bunchman MD

Professor and Director Pediatric Nephrology
Children's Hospital of Richmond
Virginia Commonwealth University School of Medicine
Richmond, Virginia

Jeffrey P. Burns MD, MPH

Chief and Shapiro Chair of Critical Care Medicine
Boston Children's Hospital
Professor of Anesthesia
Harvard Medical School
Boston, Massachusetts

Derya Caglar MD

Assistant Professor
Pediatrics
Attending Physician
Pediatric Emergency Medicine
Seattle Children's Hospital/University of Washington
Seattle, Washington

Sally Campbell BS

Haematology Registrar
Clinical Haematology
Royal Children's Hospital
Melbourne, Victoria, Australia

Joseph A. Carcillo MD

Associate Professor of Critical Care Medicine and Pediatrics
Children's Hospital of Pittsburgh of UPMC
University of Pittsburgh School of Medicine
Pittsburgh, Pennsylvania

Hector Carrillo-Lopez MD

Professor of Pediatric Critical Care and Pediatrics
Hospital Infantil de Mexico Federico Gomez

Universidad Nacional Autonoma de Mexico
Mexico City, Mexico

Katherine Cashen DO

Pediatric Intensivist
Children's Hospital of Michigan
Assistant Professor
Division of Critical Care Medicine
Department of Pediatrics
Wayne State University School of Medicine
Detroit, Michigan

Antonio Cassara MD

Visiting Assistant Professor
University of Pittsburgh School of Medicine
Pittsburgh, Pennsylvania

John R. Charpie MD, PhD

Professor and Division Director, Pediatric Cardiology
Pediatrics and Communicable Diseases
University of Michigan Medical School
Ann Arbor, Michigan

Adrian Chavez MD

Director
Pediatric Intensive Care
Hospital Infantil de Mexico Federico Gomez
Head Professor of Pediatric Critical Care and Pediatrics
Facultad de Medicina
Universidad Nacional Autonoma de Mexico
Mexico City, Mexico

Robert H. Chun MD

Associate Professor
Department of Otolaryngology
Division of Pediatric Otolaryngology
Medical College of Wisconsin
Milwaukee, Wisconsin

Jonna Derbenwick Clark MD, MA

Assistant Professor
Pediatrics, Critical Care Medicine
Affiliate Faculty
Treuman Katz Center for Pediatric Bioethics
Department of Pediatrics
Seattle Children's Hospital/University of Washington
Seattle, Washington

Robert S.B. Clark MD

Professor and Chief
Pediatric Critical Care Medicine
Medical Director
Brain Care Institute
Children's Hospital of Pittsburgh of UPMC
Associate Director
Safar Center for Resuscitation Research
University of Pittsburgh School of Medicine
Pittsburgh, Pennsylvania

Katherine C. Clement MD

Assistant Professor of Pediatrics
UNC School of Medicine
Chapel Hill, North Carolina

Thomas Conlon MD

Director of Pediatric Critical Care Ultrasound
Assistant Professor
Department of Anesthesiology and Critical Care Medicine
The Children's Hospital of Philadelphia
University of Pennsylvania Perelman School of Medicine Philadelphia, Pennsylvania

Edward E. Conway Jr., MD, MS

Chairman and Pediatrician-in-Chief
Milton and Bernice Stern Department of Pediatrics
Beth Israel Medical Center
Professor of Pediatrics
Icahn School of Medicine at Mount Sinai
New York, New York

Craig M. Coopersmith MD

Professor of Surgery
Department of Surgery
Emory University School of Medicine
Atlanta, Georgia

Seth J. Corey ME

Professor in Pediatrics and Cell and Molecular Biology
Northwestern University Feinberg School of Medicine
Evanston, Illinois

Peter N. Cox MD

Professor
Critical Care Medicine
Hospital for Sick Children
Toronto, Ontario, Canada

Martha A.Q. Curley RN, PhD, FAAN

Ellen and Robert Kapito Professor in Nursing Science

School of Nursing/Anesthesia and Critical Care Medicine
University of Pennsylvania
Nurse Scientist
Critical Care and Cardiovascular Program
Boston Children's Hospital
Boston, Massachusetts

Marek Czosnyka PhD

Professor of Clinical Neuroscience
University of Cambridge Clinical School
Department of Neurosurgery
Addenbrooke's Hospital
Cambridge, United Kingdom

Heidi J. Dalton MD, MCCM

Professor of Pediatrics
Virginia Commonwealth University
Clinical Professor of Surgery
George Washington University
Director
Adult and Pediatric ECLS
INOVA Fairfax Medical Center
Falls Church, Virginia

Mihaela Damian MD, MPH

Clinical Assistant Professor
Department of Pediatrics
Stanford University
Palo Alto, California

Peter J. Davis MD

Dr. Joseph H. Marcy Endowed Chair in Pediatric Anesthesia
University of Pittsburgh School of Medicine
Anesthesiologist-in-Chief
Children's Hospital of Pittsburgh of UPMC
Department of Anesthesia
Pittsburgh, Pennsylvania

Nicolas de Prost MD, PhD

Service de Réanimation Médicale
Hôpital Henri Mondor
Assistance Publique
Groupe de Recherche Clinique CARMAS
Université Paris Est Créteil
Créteil, France

Clifford S. Deutschman MD

Professor of Anesthesiology and Critical Care
Director

Sepsis Research Program
Perelman School of Medicine at the University of Pennsylvania
Philadelphia, Pennsylvania

Cameron Dezfulian MD

Safar Center for Resuscitation Research
Department of Critical Care Medicine
University of Pittsburgh School of Medicine
Children's Hospital of Pittsburgh of UPMC
Pittsburgh, Pennsylvania

Douglas S. Diekema MD, MPH

Professor of Pediatrics and Bioethics
Treuman Katz Center for Pediatric Bioethics
Seattle Children's Hospital/University of Washington
Seattle, Washington

Allan Doctor MD

Professor of Pediatrics and Biochemistry
Washington University School of Medicine
St. Louis, Missouri

Meaghan Doherty MD

Pediatric Cardiology Fellow
Cardiology
Children's Hospital of Pittsburgh
Pittsburgh, Pennsylvania

Molly V. Dorfman MD, PhD

Pediatric Critical Care
Valley Children's Hospital
Madera, California

John J. Downes MD

Department of Anesthesiology and Critical Care Medicine
The Children's Hospital of Philadelphia
Perelman School of Medicine at the University of Pennsylvania
Philadelphia, Pennsylvania

Didier Dreyfuss MD

Professor of Medicine
Hospital of Paris
Paris, France

Christine Duncan MD

Assistant Professor
Pediatric Hematology Oncology
Dana-Farber Cancer Institute
Boston, Massachusetts

Phylicia D. Dupree MD

Resident Physician
General Surgery
University of Cincinnati
Cincinnati, Ohio

Howard Eigen MD

Professor of Pediatrics (ret.)
Indiana University School of Medicine
President
Inspire Foundation
Indianapolis, Indiana

Nahed El-Hassan MD

Associate Professor of Pediatrics
University of Arkansas for Medical Sciences
Arkansas Children's Hospital
Little Rock, Arkansas

Carl O. Eriksson MD

Assistant Professor
Pediatric Critical Care
Department of Pediatrics
Oregon Health and Science University
Portland, Oregon

Kate Felmet MD

Assistant Professor
Departments of Critical Care Medicine and Pediatrics
University of Pittsburgh School of Medicine
Pittsburgh, Pennsylvania

Jeffrey R. Fineman MD

Professor of Pediatrics
University of California, San Francisco
San Francisco, California

Ericka L. Fink MD, MS

Associate Professor
Safar Center for Resuscitation Research
Department of Critical Care Medicine
University of Pittsburgh School of Medicine
Children's Hospital of Pittsburgh of UPMC
Pittsburgh, Pennsylvania

Frank A. Fish MD

Professor
Pediatrics
Vanderbilt Medical Center

Nashville, Tennessee

Tamara N. Fitzgerald MD, PhD

Assistant Professor
Department of Surgery
Texas Tech University – Paul L. Foster School of Medicine
El Paso, Texas

Joseph T. Flynn MD

Professor of Pediatrics
Chief - Division of Nephrology
Seattle Children's Hospital/University of Washington
Seattle, Washington

J. Julio Pérez Fontán MD

Robert L. Moore Chair in Pediatrics
Professor and Chairman, Department of Pediatrics
University of Texas Southwestern Medical Center
Physician-in-Chief, Children's Medical Center, Dallas
Dallas, Texas

Michael J. Forbes MD, FAAP

Director
Clinical Research and Outcomes Analysis
Pediatric Intensive Care Unit
Fellow
American Academy of Pediatrics Society of Critical Care Medicine
Akron, Ohio

Joseph M. Forbess MD

Director
Cardiothoracic Surgery
Co-Director
Heart Center
Children's Health, Dallas
Professor of Thoracic and Cardiovascular Surgery
Pogue Distinguished Chair in Pediatric Cardiac Surgery Research
University of Texas Southwestern Medical Center
Dallas, Texas

Deborah E. Franzon MD

Clinical Professor of Pediatrics
Division of Critical Care Medicine
University of California, San Francisco
San Francisco, California

W. Joshua Frazier MD

Division of Critical Care Medicine
Department of Pediatrics

Nationwide Children's Hospital
The Ohio State University College of Medicine
Columbus, Ohio

F. Jay Fricker MD

UF Health Congenital Heart Center
Gainesville, Florida

Bradley P. Fuhrman MD, FCCM

Professor and Chair
Department of Pediatrics
Texas Tech University – Paul L. Foster School of Medicine
Physician-in-Chief
El Paso Children's Hospital
El Paso, Texas

Xiomara Garcia-Casal MD

Associate Professor of Pediatrics
University of Arkansas for Medical Sciences
Arkansas Children's Hospital
Little Rock, Arkansas

Rebecca Gardner MD

Assistant Professor
Pediatrics
University of Washington
Seattle, Washington

Eli Gilad MD

Pediatric Critical Care
Alberta Children's Hospital and the University of Calgary
Calgary, Alberta, Canada

Richard M. Ginther Jr., CCP, FPP

Faculty Associate
Pediatric Perfusionist
Pediatric Cardiothoracic Surgery
University of Texas Southwestern Medical Center
Children's Health Dallas
Dallas, Texas

Nicole Glaser MD

Professor
Pediatric Endocrinology
UC Davis Children's Hospital
Sacramento, California

Denise M. Goodman MD, MS

Attending Physician

Division of Critical Care Medicine
Medical Director
Case Management and Care Coordination (Physician Advisor)
Ann and Robert H. Lurie Children's Hospital of Chicago
Professor
Northwestern University Feinberg School of Medicine
Chicago, Illinois

Ana Lía Graciano MD, FAAP, FCCM

Department of Pediatrics
Critical Care Medicine
Medical Director
Pediatric Cardiac Intensive Care
University of Maryland School of Medicine
Baltimore, Maryland

Kristin C. Greathouse PhD(c), MS, BSN, CPNP-AC

The Heart Center
Nationwide Children's Hospital
Columbus, Ohio

Bruce M. Greenwald MD, FAAP, FCCM

Professor of Clinical Pediatrics
Executive Vice-Chairman
Department of Pediatrics
Chief
Division of Pediatric Critical Care Medicine
Weill Cornell Medicine
New York, New York

Björn Gunnarsson MD

Department of Research
Norwegian Air Ambulance Foundation
Drøbak, Norway
SAR Helicopter
Ørland Main Air Station, Norway

Punkaj Gupta MBBS

Associate Professor of Pediatrics
University of Arkansas for Medical Sciences
Arkansas Children's Hospital
Little Rock, Arkansas

Mark W. Hall MD, FCCM

Associate Professor of Pediatrics
Chief
Division of Critical Care Medicine
Nationwide Children's Hospital
The Ohio State University

Columbus, Ohio

Yong Y. Han MD

Physical Scientist
NOAA/NESDIS
Center for Satellite Application and Research
College Park, Maryland

Cary O. Harding MD

Professor
Molecular and Medical Genetics
Oregon Health and Science University
Portland, Oregon

Mary E. Hartman MD, MPH, FRCP

Assistant Professor of Pediatrics
Pediatric Critical Care Medicine
Department of Pediatrics
Washington University School of Medicine
St. Louis, Missouri

Silvia M. Hartmann MD

Assistant Professor
Pediatric Critical Care Medicine
Seattle Children's Hospital/University of Washington School of Medicine
Seattle, Washington

Christopher M.B. Heard MB, ChB, FRCA

Clinical Professor of Anesthesiology Pediatrics
Pediatric and Community Dentistry
The State University of New York at Buffalo
Buffalo, New York

Lynn J. Hernan MD

Associate Professor
Pediatrics
Texas Tech University—Paul L. Foster School of Medicine
El Paso, Texas

Mark J. Heulitt MD, FCCM

Medical Director of Pediatric Intensive Care Unit
Spence and Becky Wilson Baptist Children's Hospital
Memphis, Tennessee

Julien I. Hoffman MD

Professor (Emeritus)
Pediatrics
University of California, San Francisco
San Francisco, California

Simon Horslen MD

Professor
Pediatrics
University of Washington School of Medicine
Seattle, Washington

Agnes I. Hunyady MD

Attending Anesthesiologist
Seattle Children's Hospital/University of Washington
Assistant Professor
University of Washington School of Medicine
Seattle, Washington

Laura Marie Ibsen MD

Professor
Pediatrics and Anesthesiology
Oregon Health and Science University
Portland, Oregon

Hanneke IJsselstijn MD, PhD

Pediatric Surgery and Intensive Care
Erasmus MC - Sophia Children's Hospital
Rotterdam, The Netherlands

Andrew Inglis Jr., MD

Associate Professor
Department of Otolaryngology
Seattle Children's Hospital/University of Washington
Seattle, Washington

Gretchen A. Linggi Irby PharmD

Pharmacist
Seattle, Washington

Olivia K. Irby MD

Assistant Professor of Pediatrics
University of Arkansas for Medical Sciences
Arkansas Children's Hospital
Little Rock, Arkansas

Gisele E. Ishak MD

Associate Professor
Department of Radiology
University of Washington
Seattle Children's Hospital/University of Washington
Seattle, Washington

Travis C. Jackson PhD

Research Assistant Professor

Department of Critical Care Medicine
Associate Director of Cell Signaling
Safar Center for Resuscitation Research
Pittsburgh, Pennsylvania

Susan Jacob PharmD

Investigational Drug Service
Seattle Children's Hospital/University of Washington
Seattle, Washington

Shelina M. Jamal MD

Clinical Assistant Professor
Pediatric Critical Care
Seattle Children's Hospital/University of Washington
Seattle, Washington

David Jardine MD

Associate Professor
Department of Otolaryngology
Seattle Children's Hospital/University of Washington School of Medicine
Seattle, Washington

Alberto Jarillo MD

Head
Respiratory Therapy Service
Associate Professor of Pediatric
Critical Care and Pediatrics
Hospital Infantil de Mexico Federico Gomez
Mexico City, Mexico

Alison M. Jeziorski MD, MBA

Assistant Professor
Department of Anesthesia and Perioperative Medicine
Medical University of South Carolina
Charleston, South Carolina

Umesh Joashi MD

Consultant Paediatric Intensivist
Leeds Teaching Hospitals NHS Trust
Leeds, United Kingdom

Prashant Joshi MD

Associate Professor
Pediatrics
University of Nebraska Medical Center
Omaha, Nebraska

Richard J. Kagan MD

Professor

Surgery
University of Cincinnati College of Medicine
Cincinnati, Ohio

Prince J. Kannankeril MD

Associate Professor
Pediatrics
Vanderbilt Children's Hospital
Nashville, Tennessee

Robert K. Kanter MD †

Adjunct Senior Research Scientist
National Center for Disaster Preparedness
Columbia University
New York, New York

Oliver Karam MD

Associate Professor
Pediatric Intensive Care Unit
Geneva University Hospital
Geneva, Switzerland

Cristin D.W. Kaspar MD

Pediatric Nephrology Fellow
Children's Hospital of Richmond
Virginia Commonwealth University School of Medicine
Richmond, Virginia

Robinder G. Khemani MD, MsCI

Associate Director of Research
Department of Anesthesiology and Critical Care
Critical Care Medicine
Children's Hospital Los Angeles
Associate Professor of Pediatrics
University of Southern California Keck School of Medicine
Los Angeles, California

Mary A. King MD

Professor of Genome Sciences and of Medicine
University of Washington
Seattle, Washington

Christa C. Jefferis Kirk PharmD

Clinical Staff Pharmacist
Critical Care
Seattle Children's Hospital
Seattle, Washington

Niranjan (Tex) Kissoon MD

Professor in Acute and Critical Care—Global Child Health
Pediatrics and Surgery (EM)
The University of British Columbia and BC Children's Hospital
Vancouver, British Columbia, Canada

Patrick M. Kochanek MD, MCCM

Ake N. Grenvik Professor and Vice Chair of Critical Care Medicine
Professor of Anesthesiology, Pediatrics and Bioengineering, and Clinical and
Translational Science
Director
Safar Center for Resuscitation Research
University of Pittsburgh School of Medicine
Pittsburgh, Pennsylvania

Keith C. Kocis MD, MS

Director
Pediatric Cardiac Intensive Care
Interim Director
Pediatric Critical Care Medicine
Sidra Medical and Research Center
Doha, Qatar

Samuel A. Kocoshis MD

Professor
Pediatrics
University of Cincinnati College of Medicine
Cincinnati, Ohio

Tsingyi Koh PharmD, BCPS

Principal Clinical Pharmacist Pediatrics/Solid Organ Transplant
Department of Pharmacy
National University Hospital
Singapore

Ada Kong PharmD

Research Pharmacist
Seattle Children's Hospital/University of Washington
Seattle, Washington

Ildiko H. Koves MD, FRACP

Associate Professor
Endocrinology and Diabetes
Seattle Children's Hospital/University of Washington
Seattle, Washington

Thomas J. Kulik MD

Senior Associate in Cardiology
Cardiology
Boston Children's Hospital

Boston, Massachusetts

Vasanth H. Kumar MD

Associate Professor
Department of Pediatrics
Director
Neonatal-Perinatal Medicine Fellowship Program
The State University of New York at Buffalo
Women and Children's Hospital of Buffalo
Buffalo, New York

Jacques Lacroix MD

Professor
Division of Pediatric Intensive Care
Department of Pediatrics
Sainte-Justine Hospital
Université de Montréal
Montreal, Quebec, Canada

Satyan Lakshminrusimha MD

Professor of Pediatrics
Chief
Division of Neonatology
Women and Children's Hospital of Buffalo
Director
Center for Developmental Biology
The State University of New York at Buffalo
Buffalo, New York

Thomas J. Lee MD

Major
United States Air Force
San Antonio, Texas

Marie Leiner PhD

Research Associate Professor
Pediatrics
Texas Tech University Health Sciences Center
El Paso, Texas

Daniel L. Levin MD

Professor Emeritus
Departments of Pediatrics and Anesthesia
Children's Hospital at Dartmouth
Geisel School of Medicine
Lebanon, New Hampshire

Mithya Lewis-Newby MD, MPH

Associate Professor